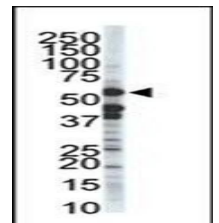
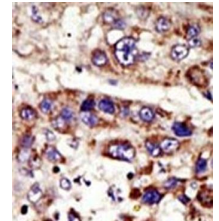


Product Datasheet

ZMPSTE24 antibody orb33882

Description	Purified rabbit polyclonal antibody.
Species/Host	Rabbit
Reactivity	Human
Predicted Reactivity	Mouse
Conjugation	Unconjugated
Tested Applications	ELISA, IHC-P, WB
Immunogen	This ZMPSTE24 antibody is generated from rabbits immunized with a KLH conjugated synthetic peptide between 440-470 amino acids from the C-terminal region of human ZMPSTE24.
Target	ZMPSTE24
Form/Appearance	PBS with 0.09% (W/V) sodium azide
Storage	Store at 2-8°C for up to 6 months. For long term storage store at -20°C in small aliquots to prevent freeze-thaw cycles.
Note	For research use only.
Isotype	IgG
Clonality	Polyclonal
Purity	Affinity purified
MW	54.813 kDa
Uniprot ID	O75844 (Human)
Entrez	10269
Dilution Range	WB: 1:1000, IHC-P: 1:50-100
Expiration Date	12 months from date of receipt.



Western blot analysis of T-47D cell lysate using ZMPSTE24 antibody (primary antibody dilution at: 1:1000)