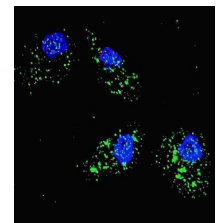
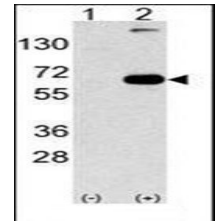


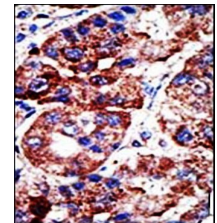
Product Datasheet

SQSTM1 antibody orb33813

Description	Rabbit polyclonal antibody to SQSTM1
Species/Host	Rabbit
Reactivity	Human, Mouse
Predicted Reactivity	Mouse, Rat
Conjugation	Unconjugated
Tested Applications	ELISA, ICC, IF, IHC-P, WB
Immunogen	This SQSTM1 (p62) antibody is generated from rabbits immunize with a KLH conjugated synthetic peptide between 317-346 amino acids from the C-terminal region of human SQSTM1 (p62).
Target	SQSTM1. KLH conjugated synthetic peptide between 317-346 amino acids from the C-terminal region of human SQSTM1 (p62)
Form/Appearance	PBS with 0.09% (W/V) sodium azide
Storage	Store at 2-8°C for up to 6 months. For long term storage store at -20°C in small aliquots to prevent freeze-thaw cycles.
Note	For research use only.
Isotype	IgG
Clonality	Polyclonal
Purity	Affinity purified
MW	47.687 kDa
Uniprot ID	Q13501 (Human)
Entrez	8878
Dilution Range	WB: 1:1000-1:2000, IHC-P: 1:50-100, IF/ICC: 1:50-100
Expiration Date	12 months from date of receipt.



Confocal immunofluorescence analysis of U251 cells using SQSTM1 antibody



Immunohistochemical analysis of formalin-fixed and paraffin-embedded human cancer tissue using SQSTM1 antibody