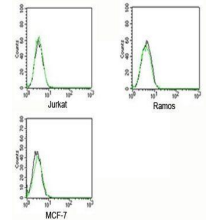


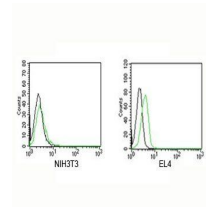
Product Datasheet

Rabbit IgG Isotype Control (FITC) orb248103

Description	Rabbit IgG Isotype Control (FITC)
Species/Host	Rabbit
Conjugation	FITC
Tested Applications	FACS, ICC, IF, IHC-P
Immunogen	This is purified naive rabbit sera and as such there was no immunogen.
Target	Rabbit IgG Isotype Control (FITC)
Form/Appearance	1X PBS with 0.05% sodium azide
Concentration	0.5 mg/ml
Storage	Store at 4°C for up to two weeks. For long term storage, aliquot and store at -20°C, avoid freeze/thaw cycles.
Note	For research use only.
Isotype	IgG
Clonality	Polyclonal
Purity	Protein A purified
Expiration Date	12 months from date of receipt.
Application Notes	Generally to be used at the same concentration as the sample being controlled for.



FACS staining of human samples using Rabbit IgG Isotype Control (FITC)



FACS staining of mouse samples using Rabbit IgG Isotype Control (FITC)