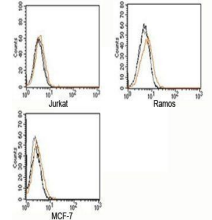


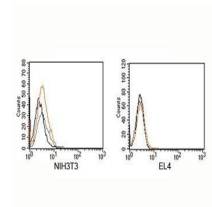
## Product Datasheet

### Rabbit Isotype Control orb248101

<b>Description</b>	Rabbit Isotype Control
<b>Species/Host</b>	Rabbit
<b>Conjugation</b>	Unconjugated
<b>Tested Applications</b>	FACS, ICC, IF, IHC-P
<b>Immunogen</b>	This is purified naive rabbit sera and as such there was no immunogen.
<b>Target</b>	Rabbit Isotype Control
<b>Form/Appearance</b>	1X PBS pH 7.4 with 0.05% sodium azide
<b>Concentration</b>	0.5 mg/ml
<b>Storage</b>	Aliquot and store at -20°C. Avoid repeated freeze-thaw cycles.
<b>Note</b>	For research use only.
<b>Isotype</b>	IgG
<b>Clonality</b>	Polyclonal
<b>Purity</b>	Protein A purified
<b>Expiration Date</b>	12 months from date of receipt.
<b>Application Notes</b>	Generally to be used at the same concentration as the sample being controlled for.



FACS staining of human samples using Rabbit Isotype Control



FACS staining of mouse samples using Rabbit Isotype Control