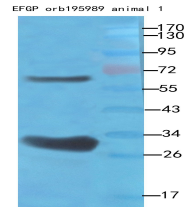


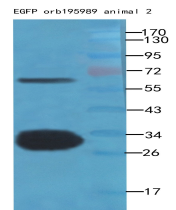
Product Datasheet

EGFP antibody orb195989

Description	Rabbit polyclonal antibody to EGFP.
Species/Host	Rabbit
Reactivity	All
Conjugation	Unconjugated
Custom conjugations	Unconjugated, HRP
Tested Applications	ELISA, WB
Immunogen	KLH conjugated synthetic peptide derived from human EGFP. Please contact us for the exact immunogen sequence. The peptide is available as orb374833 .
Target	EGFP
Form/Appearance	10 mM PBS, 0.02% sodium azide
Concentration	- 100 µg (in 200 µl): 0.5 mg/ml - 200 µg (in 400 µl): 0.5 mg/ml
Storage	Store at 4°C for up to two weeks. For long term storage, aliquot and store at -20°C, avoid freeze/thaw cycles.
Note	For research use only.
Isotype	IgG
Clonality	Polyclonal
Purity	Polyclonal antibodies are purified by peptide affinity chromatography
MW	27 kDa
Dilution Range	WB: 1:500-1000
Expiration Date	12 months from date of receipt.



Western blot analysis of recombinant protein 100ng as lysate, use 1:500 dilution rate of using EGFP antibody



Western blot analysis of recombinant protein 100ng as lysate, use 1:500 dilution rate of using EGFP antibody