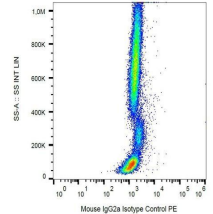


## Product Datasheet

### Mouse IgG2a Isotype Control (PE) orb222807

<b>Description</b>	Mouse IgG2a Isotype Control (PE)
<b>Species/Host</b>	Mouse
<b>Predicted Reactivity</b>	Human, Mouse, Rat
<b>Conjugation</b>	PE
<b>Tested Applications</b>	FACS, ICC, IF, IP, WB
<b>Immunogen</b>	The transplantable plasmacytoma MOPC-173 was induced by intraperitoneal injection of mineral oils into BALB/c mice.
<b>Target</b>	Mouse IgG2a (PE). This mouse IgG2a monoclonal antibody (clone MOPC-173) reacts with an unknown epitope. It does not react with a variety of resting, activated, live, and fixed mouse, rat and human tissues.
<b>Form/Appearance</b>	PBS containing 15 mM sodium azide and 0.2% (w/v) high-grade protease free BSA as a stabilizing agent.
<b>Storage</b>	Store at 2-8°C.
<b>Note</b>	For research use only.
<b>Isotype</b>	IgG2a
<b>Clone ID</b>	MOPC-173
<b>Expiration Date</b>	12 months from date of receipt.



Flow cytometric analysis of human peripheral blood using Mouse IgG2a Isotype Control (PE)