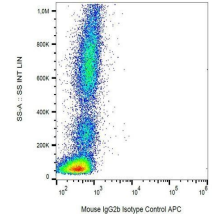


Product Datasheet

IgG2b Isotype control (APC) orb154458

| | |
|----------------------------|---|
| Description | Mouse monoclonal antibody conjugated to APC which recognizes IgG2b that belongs to many immunoglobulin G. It can be used as a negative control, to distinguish specific from non-specific binding of mouse IgG2b fluorochrome-conjugated antibodies to human cells. It was found that IgG2a was superior to IgG1 in activating complement. IgG2 is an antibody molecule induced by infection. |
| Species/Host | Mouse |
| Conjugation | APC |
| Tested Applications | FACS, ICC, IF, IHC-Fr, IHC-P, IP, WB |
| Immunogen | KLH-coupled trinitrophenol |
| Target | IgG2b. This mouse IgG2b (kappa) monoclonal antibody (clone MPC-11) reacts with an epitope irrelevant for a variety of resting, activated, live, and fixed human, mouse, and rat tissues. |
| Form/Appearance | PBS containing 15 mM sodium azide and 0.2% (w/v) high-grade protease free BSA as a stabilizing agent. |
| Storage | Store at 2-8°C. |
| Note | For research use only. |
| Isotype | IgG2b |
| Clonality | Monoclonal |
| Clone ID | MPC-11 |
| Expiration Date | 12 months from date of receipt. |



Flow cytometric analysis of human peripheral blood using IgG2b Isotype control (APC)