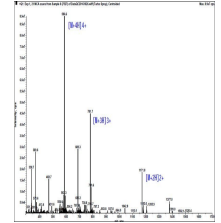


## Product Datasheet

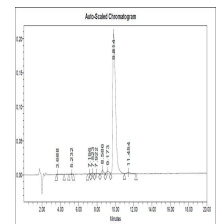
### CCP peptide (orb72449)

<b>Description</b>	CCP peptide
<b>Conjugation</b>	Unconjugated
<b>Tested Applications</b>	HPLC
<b>Sequence</b>	HQCHQEST citrulline GRSRGRCGRSGS; disulfide bonds: C3 = C16
<b>Target</b>	CCP
<b>Form/Appearance</b>	Lyophilised
<b>Storage</b>	Store at -20 °C, avoid repeated freeze/thaw cycles.
<b>Note</b>	For research use only.
<b>Source</b>	Synthetic
<b>Expiration Date</b>	12 months from date of receipt.

**Application Notes** This peptide contains a disulfide bridge, so may be prone to disulfide scrambling and chain formation, leading to insoluble precipitate if it spends too long in a basic solvent. This is a very soluble peptide, so will dissolve in water. As for concentrations, it should dissolve at 5mg/mL of water, especially with gentle warming. We advise storing peptides cold, dry and frozen to avoid oxidation and UV effects. It will be relatively stable if maintained dry, frozen and dark. When this peptide (and it's biotinylated form) is dissolved, it will start to oxidise. We recommend that if the peptide has to be dissolved for later use, it should be aliquoted to useful units and stored as cold as practical to avoid freeze-thaw cycles, which will enhance oxidative damage.



CCP peptide



Auto-Scaled Chromatogram