

Biorbyt Ltd.

5 Orwell Furlong, Cowley Road, Cambridge

CB4 0WY, United Kingdom

Email: info@biorbyt.com

Phone: +44 (0)1223 859 353 | Fax: +44 (0)1223 280 240

Biorbyt LLC.

1100 Corporate Square Drive, Helix Center, Suite 221

St Louis, MO 63132, United States

Email: info@biorbyt.com

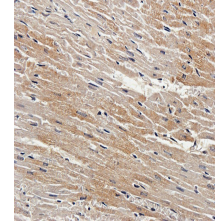
Phone: +1 (415) 906 5211 | Fax: +1 (415) 651 8558

Product Datasheet

Mkl antibody
orb32399

Description

Rabbit polyclonal antibody to MIK1 (mixed lineage kinase domain-like) is a 471 amino acid protein that contains one protei kinase domain which is thought to be catalytically inactive. Chromosome 16, which is associated with a variety of genetic disorders, encodes over 900 genes and comprises nearly 3% of the human genome. The rare disorder Rubinstein-Taybi syndrom is associated with chromosome 16, as is Crohn's disease, which i a gastrointestinal inflammatory condition.



IHC-P staining of guinea pig heart tissue using anti-Mlkl (2.5 ug/ml)

Species/Host

Rabbit

Reactivity

Guinea pig, Human, Mouse, Rat

Conjugation

Unconjugated

Custom conjugations

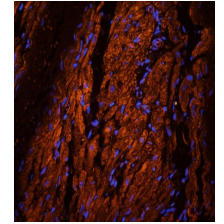
Unconjugated, HRP

Tested Applications

ICC, IF, IHC-P, WB

Immunogen

KLH conjugated synthetic peptide derived from human MIK1. Please **contact us** for the exact immunogen sequence. The peptide is available as **orb374793**.



Immunofluorescence image of guinea pig heart tissue using anti-Mlkl (2.5 ug/ml)

Target

MIK1

Form/Appearance

10 mM PBS, 0.02% sodium azide

Concentration

- 100 µg (in 200 µl): 0.5 mg/ml
- 200 µg (in 400 µl): 0.5 mg/ml

Storage

Store at 4°C for up to two weeks. For long term storage, aliquot and store at -20°C, avoid freeze/thaw cycles.

Note

For research use only.

Isotype

IgG

Clonality

Polyclonal

Purity

Polyclonal antibodies are purified by peptide affinity chromatography

MW

54 kDa

Uniprot ID

Q8NB16 (Human); **Q9D2Y4** (Mouse); **D3ZKP6** (Rat)

NCBI

NP_001135969.1; **NM_001142497.2**

Entrez

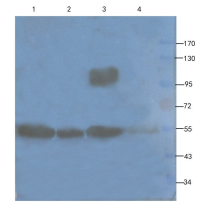
197259

Dilution Range

WB: 1:200-2000, IHC-P: 1:100-500, IF/ICC: 1:100-500

Expiration Date

12 months from date of receipt.



Western blot analysis of human breast tumour (lane 1), human thyroid tumour (lane 2), human lung cancer (lane 3), Hela cells (lane 4) using MIK1 antibody (1 ug/ml)