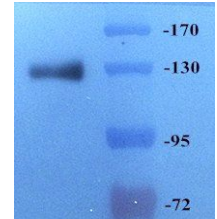


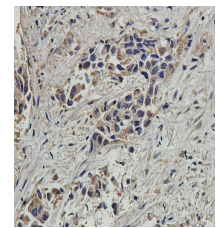
Product Datasheet

CD163 antibody orb13303

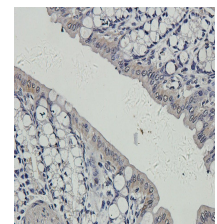
Description	Rabbit polyclonal antibody to CD163. This protein (also known as M130), belongs to a macrophage-associated antigen, which is a member of the scavenger receptor cysteine-rich (SRCR) superfamily. CD163 acts as a receptor that scavenges hemoglobin by mediating endocytosis of haptoglobin-hemoglobin complexes.
Species/Host	Rabbit
Reactivity	Guinea pig, Human, Mouse, Rat
Conjugation	Unconjugated
Custom conjugations	Unconjugated, HRP
Tested Applications	ICC, IF, IHC-P, WB
Immunogen	KLH conjugated synthetic peptide derived from human CD163. Please contact us for the exact immunogen sequence. The peptide is available as orb374759 .
Target	CD163
Form/Appearance	10 mM PBS, 0.02% sodium azide
Concentration	- 100 µg (in 200 µl): 0.5 mg/ml - 200 µg (in 400 µl): 0.5 mg/ml
Storage	Store at 4°C for up to two weeks. For long term storage, aliquot and store at -20°C, avoid freeze/thaw cycles.
Note	For research use only.
Isotype	IgG
Clonality	Polyclonal
Purity	Polyclonal antibodies are purified by peptide affinity chromatography
MW	125 kDa
Uniprot ID	Q86VB7 (Human); Q2VLH6 (Mouse); D3Z9U2 (Rat)
NCBI	NP_004235.41 ; NM_004244.51
Entrez	9332
Dilution Range	IHC-P: 1: 100-600, WB: 1:500, ICC: 1:100
Expiration Date	12 months from date of receipt.



Western blot analysis of rat lung tissue using anti-CD163 (dilution of primary antibody at 1:500)



Immunohistochemical staining of paraffin embedded human lung cancer tissue using CD163 antibody (2.5 ug/ml)



Immunohistochemical staining of guinea pig colon tissue using anti-CD163 (2.5 ug/ml)