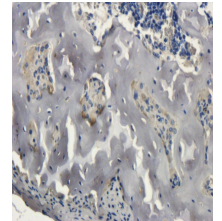


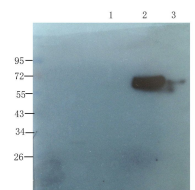
Product Datasheet

Collagen X antibody orb10444

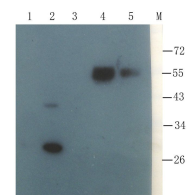
Description	Rabbit polyclonal to Collagen X
Species/Host	Rabbit
Reactivity	Bovine, Canine, Gallus, Human, Mouse, Rat
Conjugation	Unconjugated
Custom conjugations	Unconjugated, HRP
Tested Applications	ELISA, IHC-P, WB
Immunogen	KLH conjugated synthetic peptide derived from human Collagen X. Please contact us for the exact immunogen sequence. The peptide is available as orb374717 .
Target	Collagen X
Form/Appearance	10 mM PBS, 0.02% sodium azide
Concentration	- 100 µg (in 200 µl): 0.5 mg/ml - 200 µg (in 400 µl): 0.5 mg/ml
Storage	Store at 4°C for up to two weeks. For long term storage, aliquot and store at -20°C, avoid freeze/thaw cycles.
Note	For research use only.
Isotype	IgG
Clonality	Polyclonal
Purity	Polyclonal antibodies are purified by peptide affinity chromatography
MW	66 kDa
Uniprot ID	Q03692 (Human); Q05306 (Mouse)
NCBI	NP_000484.2 ; NM_000493.3
Entrez	1300
Dilution Range	IHC-P: 1:300-500, WB: 1:200-2000
Expiration Date	12 months from date of receipt.



Immunohistochemical staining of paraffin embedded mouse bone marrow tissue using anti-Collagen X (2.5 ug/ml)



WB analysis of mouse pancreas (lane 1), human breast cancer (lane 2), human mammary fibroma (lane 3) using Collagen X antibody (1 ug/ml)



Western blot analysis of mouse spinal cord (lane 1), mouse liver (lane 2), mouse pancreas (lane 3), human breast cancer (lane 4), human mammary fibroma (lane 5) using Collagen X antibody (1 ug/ml)