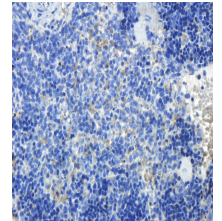


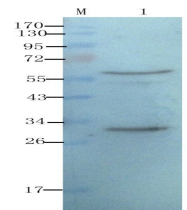
Product Datasheet

CD8 antibody orb10325

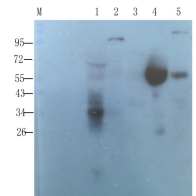
Description	Rabbit polyclonal antibody to CD8
Species/Host	Rabbit
Reactivity	Human, Mouse, Rat
Conjugation	Unconjugated
Custom conjugations	Unconjugated, HRP
Tested Applications	ELISA, IHC-P, WB
Immunogen	KLH conjugated synthetic peptide derived from human CD8. Please contact us for the exact immunogen sequence. The peptide is available as orb374713 .
Target	CD8
Form/Appearance	10 mM PBS, 0.02% sodium azide
Concentration	- 100 µg (in 200 µl): 0.5 mg/ml - 200 µg (in 400 µl): 0.5 mg/ml
Storage	Store at 4°C for up to two weeks. For long term storage, aliquot and store at -20°C, avoid freeze/thaw cycles.
Note	For research use only.
Isotype	IgG
Clonality	Polyclonal
Purity	Polyclonal antibodies are purified by peptide affinity chromatography
MW	26 kDa
Uniprot ID	P01732 (Human); P10300 (Mouse); P05541 (Rat)
NCBI	NP_001074579.11 ; NM_001081110.21
Entrez	12525
Dilution Range	WB: 1:200-800, IHC-P: 1:100-300 (based on 0.5 mg/ml)
Expiration Date	12 months from date of receipt.
Application Notes	This antibody is available without BSA and NaN3, please contact us for details



IHC-P image of rat spleen tissue using CD8 antibody (2.5 ug/ml)



WB analysis of rat thymus (lane 1) using CD8 antibody (1 ug/ml)



WB analysis of rat thymus (lane 1), rat spleen (lane 2), rat brain (lane 3), human breast cancer (lane 4), human endometrial cancer (lane 5) using CD8 antibody (1 ug/ml)