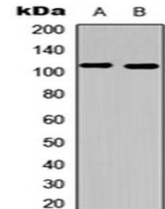


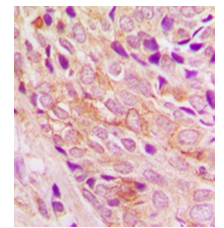
Product Datasheet

PI3K p110 alpha antibody orb256751

Description	Rabbit polyclonal antibody to PI3K p110 alpha
Species/Host	Rabbit
Reactivity	Human, Mouse, Rat
Conjugation	Unconjugated
Custom conjugations	Unconjugated, HRP
Tested Applications	IHC-P, WB
Immunogen	KLH-conjugated synthetic peptide encompassing a sequence within the center region of human PI3K p110 alpha. The exact sequence is proprietary. Please contact us for the immunogen region. The peptide is available as orb257041 .
Target	PI3K p110 alpha. Recognizes endogenous levels of PI3K p110 alpha protein.
Form/Appearance	Liquid in 0.42% Potassium phosphate, 0.87% Sodium chloride, pH 7.3, 30% glycerol, and 0.01% sodium azide.
Storage	Store at 4°C. Upon delivery aliquot and store at -20°C for one year. Avoid freeze/thaw cycles.
Note	For research use only.
Isotype	IgG
Clonality	Polyclonal
Purity	The antibody was purified by immunogen affinity chromatography.
Uniprot ID	P42336 (Human); P42337 (Mouse)
Entrez	5290
Dilution Range	WB: 1:500-1000, IHC-P: 1:100-200
Expiration Date	12 months from date of receipt.



Western blot analysis of HeLa (Lane1), mouse liver (Lane2) whole cell using PI3K p110 alpha antibody



Immunohistochemical analysis of formalin-fixed and paraffin-embedded human breast cancer tissue using PI3K p110 alpha antibody