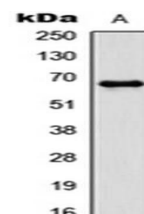


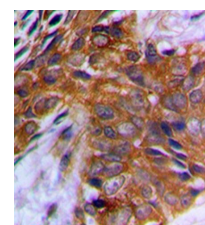
Product Datasheet

PAK1 (phospho-T212) antibody orb256740

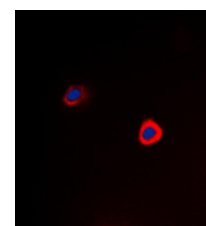
Description	Rabbit polyclonal antibody to PAK1 (phospho-T212)
Species/Host	Rabbit
Reactivity	Human, Mouse, Rat
Conjugation	Unconjugated
Custom conjugations	Unconjugated, Biotin, FITC, HRP, CF647, CF488A, CF594, CF405M
Tested Applications	ICC, IF, IHC-P, WB
Immunogen	KLH-conjugated synthetic peptide encompassing a sequence within the center region of human PAK1 (pT212). The exact sequence is proprietary. Please contact us for the immunogen region. The peptide is available as orb257030 .
Target	PAK1. Recognizes endogenous levels of PAK1 (pT212) protein.
Form/Appearance	Liquid in 0.42% Potassium phosphate, 0.87% Sodium chloride, pH 7.3, 30% glycerol, and 0.01% sodium azide.
Storage	Store at 4°C. Upon delivery aliquot and store at -20°C for one year. Avoid freeze/thaw cycles.
Note	For research use only.
Isotype	IgG
Clonality	Polyclonal
Purity	The antibody was purified by immunogen affinity chromatography.
Uniprot ID	Q13153 (Human); O88643 (Mouse); P35465 (Rat)
Entrez	5058
Dilution Range	WB: 1:500-1000, IHC-P: 1:100-200, IF/ICC: 1:100-500
Expiration Date	12 months from date of receipt.



Western blot analysis of HCT116 (Lane1) whole cell using PAK1 (phospho-T212) antibody



Immunohistochemical analysis of formalin-fixed and paraffin-embedded human prostate cancer tissue using PAK1 (phospho-T212) antibody



Immunofluorescence analysis of HeLa cells lysates using PAK1 (phospho-T212) antibody