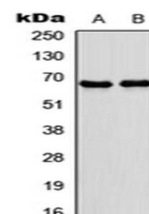


Product Datasheet

NR4A3 antibody orb256728

Description	Rabbit polyclonal antibody to NR4A3
Species/Host	Rabbit
Reactivity	Human, Monkey, Porcine, Rat
Conjugation	Unconjugated
Custom conjugations	Unconjugated, HRP
Tested Applications	WB
Immunogen	KLH-conjugated synthetic peptide encompassing a sequence within the center region of human NR4A3. The exact sequence is proprietary. Please contact us for the immunogen region. The peptide is available as orb257018 .
Target	NR4A3. Recognizes endogenous levels of NR4A3 protein.
Form/Appearance	Liquid in 0.42% Potassium phosphate, 0.87% Sodium chloride, pH 7.3, 30% glycerol, and 0.01% sodium azide.
Storage	Store at 4°C. Upon delivery aliquot and store at -20°C for one year. Avoid freeze/thaw cycles.
Note	For research use only.
Isotype	IgG
Clonality	Polyclonal
Purity	The antibody was purified by immunogen affinity chromatography.
Uniprot ID	Q92570 (Human); Q9QZB6 (Mouse); P51179 (Rat)
Entrez	8013
Dilution Range	WB: 1:500-1000
Expiration Date	12 months from date of receipt.



Western blot analysis of IMR32 (Lane1), rat skeletal muscle (Lane2) whole cell using NR4A3 antibody