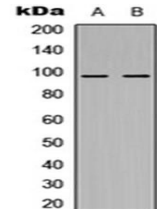


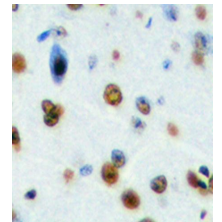
## Product Datasheet

### NOM1 antibody orb256722

<b>Description</b>	Rabbit polyclonal antibody to NOM1
<b>Species/Host</b>	Rabbit
<b>Reactivity</b>	Human, Rat
<b>Conjugation</b>	Unconjugated
<b>Custom conjugations</b>	Unconjugated, Biotin, FITC, HRP, CF647, CF488A, CF594, CF405M
<b>Tested Applications</b>	IHC-P, WB
<b>Immunogen</b>	KLH-conjugated synthetic peptide encompassing a sequence within the C-term region of human NOM1. The exact sequence is proprietary. Please contact us for the immunogen region. The peptide is available as <b>orb257012</b> .
<b>Target</b>	NOM1. Recognizes endogenous levels of NOM1 protein.
<b>Form/Appearance</b>	Liquid in 0.42% Potassium phosphate, 0.87% Sodium chloride, pH 7.3, 30% glycerol, and 0.01% sodium azide.
<b>Storage</b>	Store at 4°C. Upon delivery aliquot and store at -20°C for one year. Avoid freeze/thaw cycles.
<b>Note</b>	For research use only.
<b>Isotype</b>	IgG
<b>Clonality</b>	Polyclonal
<b>Purity</b>	The antibody was purified by immunogen affinity chromatography.
<b>Uniprot ID</b>	<b>Q5C9Z4</b> (Human); <b>Q3UFM5</b> (Mouse)
<b>Entrez</b>	<b>64434</b>
<b>Dilution Range</b>	WB: 1:500-1000, IHC-P: 1:100-200
<b>Expiration Date</b>	12 months from date of receipt.



Western blot analysis of HEK293T (Lane1), H9C2 (Lane2) whole cell using NOM1 antibody



Immunohistochemical analysis of formalin-fixed and paraffin-embedded human brain tissue using NOM1 antibody