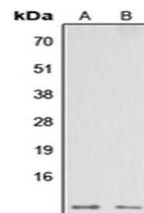


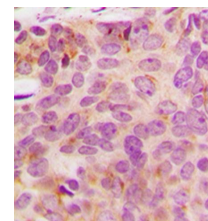
Product Datasheet

NDUFA3 antibody orb256712

Description	Rabbit polyclonal antibody to NDUFA3
Species/Host	Rabbit
Reactivity	Human, Mouse
Conjugation	Unconjugated
Custom conjugations	Unconjugated, Biotin, FITC, HRP, CF647, CF488A, CF594, CF405M
Tested Applications	IHC-P, WB
Immunogen	KLH-conjugated synthetic peptide encompassing a sequence within the center region of human NDUFA3. The exact sequence is proprietary. Please contact us for the immunogen region. The peptide is available as orb257002 .
Target	NDUFA3. Recognizes endogenous levels of NDUFA3 protein.
Form/Appearance	Liquid in 0.42% Potassium phosphate, 0.87% Sodium chloride, pH 7.3, 30% glycerol, and 0.01% sodium azide.
Storage	Store at 4°C. Upon delivery aliquot and store at -20°C for one year. Avoid freeze/thaw cycles.
Note	For research use only.
Isotype	IgG
Clonality	Polyclonal
Purity	The antibody was purified by immunogen affinity chromatography.
Uniprot ID	O95167 (Human); Q9CQ91 (Mouse)
Entrez	4696
Dilution Range	WB: 1:500-1000, IHC-P: 1:100-200
Expiration Date	12 months from date of receipt.



Western blot analysis of HEK293T (Lane1), Raw264.7 (Lane2) whole cell using NDUFA3 antibody



Immunohistochemical analysis of formalin-fixed and paraffin-embedded human breast cancer tissue using NDUFA3 antibody