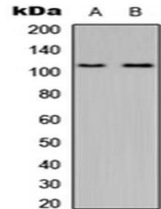


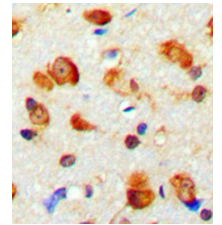
Product Datasheet

MYO1D antibody orb256704

Description	Rabbit polyclonal antibody to MYO1D
Species/Host	Rabbit
Reactivity	Human, Monkey, Mouse, Rat
Conjugation	Unconjugated
Custom conjugations	Unconjugated, HRP
Tested Applications	IHC-P, WB
Immunogen	KLH-conjugated synthetic peptide encompassing a sequence within the C-term region of human MYO1D. The exact sequence is proprietary. Please contact us for the immunogen region. The peptide is available as orb256994 .
Target	MYO1D. Recognizes endogenous levels of MYO1D protein.
Form/Appearance	Liquid in 0.42% Potassium phosphate, 0.87% Sodium chloride, pH 7.3, 30% glycerol, and 0.01% sodium azide.
Storage	Store at 4°C. Upon delivery aliquot and store at -20°C for one year. Avoid freeze/thaw cycles.
Note	For research use only.
Isotype	IgG
Clonality	Polyclonal
Purity	The antibody was purified by immunogen affinity chromatography.
Uniprot ID	Q94832 (Human); Q5SYD0 (Mouse); Q63357 (Rat)
Entrez	4642
Dilution Range	WB: 1:500-1000, IHC-P: 1:100-200
Expiration Date	12 months from date of receipt.



Western blot analysis of HeLa (Lane1), Raw264.7 (Lane2) whole cell using MYO1D antibody



Immunohistochemical analysis of formalin-fixed and paraffin-embedded human brain tissue using MYO1D antibody