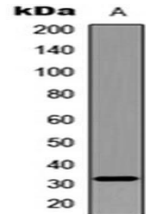


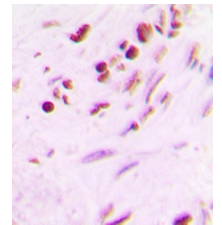
Product Datasheet

MYF5 antibody orb256701

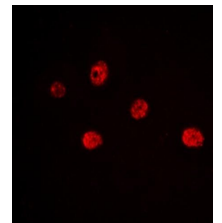
Description	Rabbit polyclonal antibody to MYF5
Species/Host	Rabbit
Reactivity	Human, Monkey
Conjugation	Unconjugated
Custom conjugations	Unconjugated, HRP
Tested Applications	ICC, IF, IHC-P, WB
Immunogen	KLH-conjugated synthetic peptide encompassing a sequence within the center region of human MYF5. The exact sequence is proprietary. Please contact us for the immunogen region. The peptide is available as orb256991 .
Target	MYF5. Recognizes endogenous levels of MYF5 protein.
Form/Appearance	Liquid in 0.42% Potassium phosphate, 0.87% Sodium chloride, pH 7.3, 30% glycerol, and 0.01% sodium azide.
Storage	Store at 4°C. Upon delivery aliquot and store at -20°C for one year. Avoid freeze/thaw cycles.
Note	For research use only.
Isotype	IgG
Clonality	Polyclonal
Purity	The antibody was purified by immunogen affinity chromatography.
Uniprot ID	P13349 (Human); P24699 (Mouse)
Entrez	4617
Dilution Range	WB: 1:500-1000, IHC-P: 1:100-200, IF/ICC: 1:100-500
Expiration Date	12 months from date of receipt.



Western blot analysis of Jurkat (Lane 1) whole cell using MYF5 antibody



Immunohistochemical analysis of formalin-fixed and paraffin-embedded human lung cancer tissue using MYF5 antibody



Immunofluorescence analysis of Jurkat cells lysates using MYF5 antibody