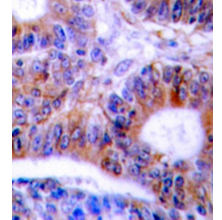


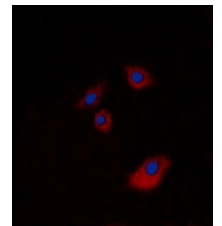
Product Datasheet

Cytokeratin 20 antibody orb256650

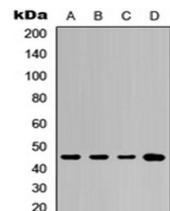
Description	Rabbit polyclonal antibody to Cytokeratin 20
Species/Host	Rabbit
Reactivity	Human, Mouse, Porcine, Rat
Conjugation	Unconjugated
Custom conjugations	Unconjugated, HRP
Tested Applications	ICC, IF, IHC-P, WB
Immunogen	KLH-conjugated synthetic peptide encompassing a sequence within the C-term region of human Cytokeratin 20. The exact sequence is proprietary. Please contact us for the immunogen region. The peptide is available as orb256940 .
Target	Cytokeratin 20. Recognizes endogenous levels of Cytokeratin 20 protein.
Form/Appearance	Liquid in 0.42% Potassium phosphate, 0.87% Sodium chloride, pH 7.3, 30% glycerol, and 0.01% sodium azide.
Storage	Store at 4°C. Upon delivery aliquot and store at -20°C for one year. Avoid freeze/thaw cycles.
Note	For research use only.
Isotype	IgG
Clonality	Polyclonal
Purity	The antibody was purified by immunogen affinity chromatography.
Uniprot ID	P35900 (Human); Q9D312 (Mouse); P25030 (Rat)
Entrez	54474
Dilution Range	WB: 1:500-1000, IHC-P: 1:100-200, IF/ICC: 1:100-500
Expiration Date	12 months from date of receipt.



Immunohistochemical analysis of formalin-fixed and paraffin-embedded human colon cancer tissue using Cytokeratin 20 antibody



Immunofluorescence analysis of A549 cells lysates using Cytokeratin 20 antibody



Western blot analysis of A549 (Lane1), NS-1 (Lane2), mouse kidney (Lane3), rat kidney (Lane4) whole cell using Cytokeratin 20 antibody