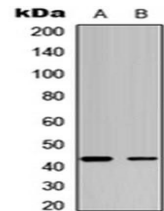


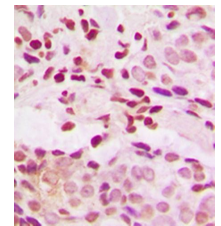
Product Datasheet

JUNB (phospho-S259) antibody orb256641

Description	Rabbit polyclonal antibody to JUNB (phospho-S259)
Species/Host	Rabbit
Reactivity	Human, Mouse, Rat, Sheep
Conjugation	Unconjugated
Custom conjugations	Unconjugated, HRP
Tested Applications	IHC-P, IP, WB
Immunogen	KLH-conjugated synthetic peptide encompassing a sequence within the C-term region of human JUNB (pS259). The exact sequence is proprietary. Please contact us for the immunogen region. The peptide is available as orb256931 .
Target	JUNB. Recognizes endogenous levels of JUNB (pS259) protein.
Form/Appearance	Liquid in 0.42% Potassium phosphate, 0.87% Sodium chloride, pH 7.3, 30% glycerol, and 0.01% sodium azide.
Storage	Store at 4°C. Upon delivery aliquot and store at -20°C for one year. Avoid freeze/thaw cycles.
Note	For research use only.
Isotype	IgG
Clonality	Polyclonal
Purity	The antibody was purified by immunogen affinity chromatography.
Uniprot ID	P17275 (Human); P09450 (Mouse); P24898 (Rat)
Entrez	3726
Dilution Range	WB: 1:500-1000, IHC-P: 1:100-200, IP: 1:10-100
Expiration Date	12 months from date of receipt.



Western blot analysis of HeLa (Lane1), MCF7 (Lane2) whole cell using JUNB (phospho-S259) antibody



Immunohistochemical analysis of formalin-fixed and paraffin-embedded human breast cancer tissue using JUNB (phospho-S259) antibody