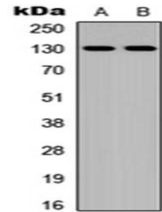


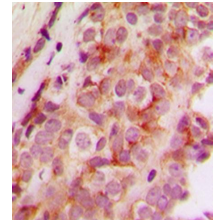
## Product Datasheet

### JMY antibody orb256639

|                            |   |
|----------------------------|---|
| <b>Description</b>         | Rabbit polyclonal antibody to JMY   |
| <b>Species/Host</b>        | Rabbit  |
| <b>Reactivity</b>          | Canine, Feline, Human, Mouse, Porcine   |
| <b>Conjugation</b>         | Unconjugated  |
| <b>Custom conjugations</b> | Unconjugated, Biotin, FITC, HRP, CF647, CF488A, CF594, CF405M   |
| <b>Tested Applications</b> | IHC-P, WB   |
| <b>Immunogen</b>           | KLH-conjugated synthetic peptide encompassing a sequence within the C-term region of human JMY. The exact sequence is proprietary. Please contact us for the immunogen region. The peptide is available as <b>orb256929</b> . |
| <b>Target</b>              | JMY. Recognizes endogenous levels of JMY protein.   |
| <b>Form/Appearance</b>     | Liquid in 0.42% Potassium phosphate, 0.87% Sodium chloride, pH 7.3, 30% glycerol, and 0.01% sodium azide.   |
| <b>Storage</b>             | Store at 4°C. Upon delivery aliquot and store at -20°C for one year. Avoid freeze/thaw cycles.  |
| <b>Note</b>                | For research use only.  |
| <b>Isotype</b>             | IgG   |
| <b>Clonality</b>           | Polyclonal  |
| <b>Purity</b>              | The antibody was purified by immunogen affinity chromatography.   |
| <b>Uniprot ID</b>          | <b>Q8N9B5</b> (Human); <b>Q9QXM1</b> (Mouse)  |
| <b>Entrez</b>              | <b>133746</b>   |
| <b>Dilution Range</b>      | WB: 1:500-1000, IHC-P: 1:100-200  |
| <b>Expiration Date</b>     | 12 months from date of receipt.   |



Western blot analysis of Jurkat (Lane1), MCF7 (Lane2) whole cell using JMY antibody



Immunohistochemical analysis of formalin-fixed and paraffin-embedded human breast cancer tissue using JMY antibody