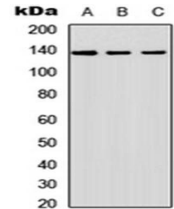


Product Datasheet

SHIP2 antibody orb256630

Description	Rabbit polyclonal antibody to SHIP2
Species/Host	Rabbit
Reactivity	Human, Mouse, Porcine, Rat
Conjugation	Unconjugated
Custom conjugations	Unconjugated, HRP
Tested Applications	WB
Immunogen	KLH-conjugated synthetic peptide encompassing a sequence within the center region of human SHIP2. The exact sequence is proprietary. Please contact us for the immunogen region. The peptide is available as orb256920 .
Target	SHIP2. Recognizes endogenous levels of SHIP2 protein.
Form/Appearance	Liquid in 0.42% Potassium phosphate, 0.87% Sodium chloride, pH 7.3, 30% glycerol, and 0.01% sodium azide.
Storage	Store at 4°C. Upon delivery aliquot and store at -20°C for one year. Avoid freeze/thaw cycles.
Note	For research use only.
Isotype	IgG
Clonality	Polyclonal
Purity	The antibody was purified by immunogen affinity chromatography.
Uniprot ID	O15357 (Human); Q6P549 (Mouse); Q9WVR3 (Rat)
Entrez	3636
Dilution Range	WB: 1:500-1000
Expiration Date	12 months from date of receipt.



Western blot analysis of A549 (Lane1), NS-1 (Lane2), PC12 (Lane3) whole cell using SHIP2 antibody