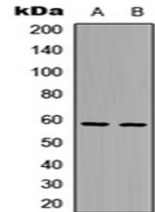


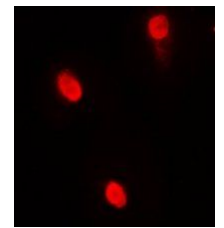
## Product Datasheet

### AIOLOS antibody orb256617

<b>Description</b>	Rabbit polyclonal antibody to AIOLOS
<b>Species/Host</b>	Rabbit
<b>Reactivity</b>	Human, Monkey
<b>Conjugation</b>	Unconjugated
<b>Custom conjugations</b>	Unconjugated, HRP
<b>Tested Applications</b>	ICC, IF, WB
<b>Immunogen</b>	KLH-conjugated synthetic peptide encompassing a sequence within the center region of human AIOLOS. The exact sequence is proprietary. Please contact us for the immunogen region. The peptide is available as <b>orb256907</b> .
<b>Target</b>	AIOLOS. Recognizes endogenous levels of AIOLOS protein.
<b>Form/Appearance</b>	Liquid in 0.42% Potassium phosphate, 0.87% Sodium chloride, pH 7.3, 30% glycerol, and 0.01% sodium azide.
<b>Storage</b>	Store at 4°C. Upon delivery aliquot and store at -20°C for one year. Avoid freeze/thaw cycles.
<b>Note</b>	For research use only.
<b>Isotype</b>	IgG
<b>Clonality</b>	Polyclonal
<b>Purity</b>	The antibody was purified by immunogen affinity chromatography.
<b>Uniprot ID</b>	<b>Q9UKT9</b> (Human)
<b>Entrez</b>	<b>22806</b>
<b>Dilution Range</b>	WB: 1:500-1000, IF/ICC: 1:100-500
<b>Expiration Date</b>	12 months from date of receipt.



Western blot analysis of HepG2 (Lane1), HeLa (Lane2) whole cell using AIOLOS antibody



Immunofluorescence analysis of HepG2 cells using AIOLOS antibody