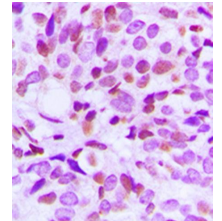


Product Datasheet

BRAF35 antibody orb256604

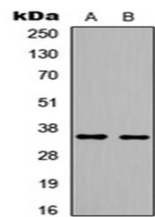
Description	Rabbit polyclonal antibody to BRAF35
Species/Host	Rabbit
Reactivity	Human
Conjugation	Unconjugated
Custom conjugations	Unconjugated, HRP
Tested Applications	ICC, IF, IHC-P, WB
Immunogen	KLH-conjugated synthetic peptide encompassing a sequence within the N-term region of human BRAF35. The exact sequence is proprietary. Please contact us for the immunogen region. The peptide is available as orb256894 .
Target	BRAF35. Recognizes endogenous levels of BRAF35 protein.
Form/Appearance	Liquid in 0.42% Potassium phosphate, 0.87% Sodium chloride, pH 7.3, 30% glycerol, and 0.01% sodium azide.
Storage	Store at 4°C. Upon delivery aliquot and store at -20°C for one year. Avoid freeze/thaw cycles.
Note	For research use only.
Isotype	IgG
Clonality	Polyclonal
Purity	The antibody was purified by immunogen affinity chromatography.
Uniprot ID	Q9P0W2 (Human)
Entrez	10362
Dilution Range	WB: 1:500-1000, IHC-P: 1:100-200, IF/ICC: 1:100-500
Expiration Date	12 months from date of receipt.



Immunohistochemical analysis of formalin-fixed and paraffin-embedded human breast cancer tissue using BRAF35 antibody



Immunofluorescence analysis of HEK293T cells lysates using BRAF35 antibody



Western blot analysis of HeLa (Lane1), HEK293T (Lane2) whole cell using BRAF35 antibody