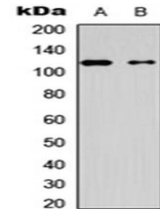


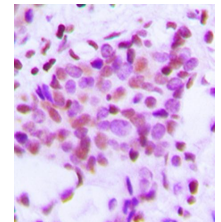
Product Datasheet

Hexokinase 1 antibody orb256602

Description	Rabbit polyclonal antibody to Hexokinase 1
Species/Host	Rabbit
Reactivity	Canine, Feline, Human, Mouse, Porcine, Rat, Zebrafish
Conjugation	Unconjugated
Custom conjugations	Unconjugated, HRP
Tested Applications	ICC, IF, IHC-P, WB
Immunogen	KLH-conjugated synthetic peptide encompassing a sequence within the N-term region of human Hexokinase 1. The exact sequence is proprietary. Please contact us for the immunogen region. The peptide is available as orb256892 .
Target	Hexokinase 1. Recognizes endogenous levels of Hexokinase 1 protein.
Form/Appearance	Liquid in 0.42% Potassium phosphate, 0.87% Sodium chloride, pH 7.3, 30% glycerol, and 0.01% sodium azide.
Storage	Store at 4°C. Upon delivery aliquot and store at -20°C for one year. Avoid freeze/thaw cycles.
Note	For research use only.
Isotype	IgG
Clonality	Polyclonal
Purity	The antibody was purified by immunogen affinity chromatography.
Uniprot ID	P19367 (Human); P17710 (Mouse); P05708 (Rat)
Entrez	3098
Dilution Range	WB: 1:500-1000, IHC-P: 1:100-200, IF/ICC: 1:100-500
Expiration Date	12 months from date of receipt.



Western blot analysis of HEK293T (Lane1), mouse brain (Lane2) whole cell using Hexokinase 1 antibody



Immunohistochemical analysis of formalin-fixed and paraffin-embedded human breast cancer tissue using Hexokinase 1 antibody



Immunofluorescence analysis of HEK293T cells lysates using Hexokinase 1 antibody