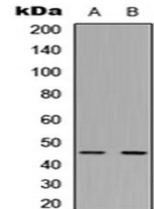


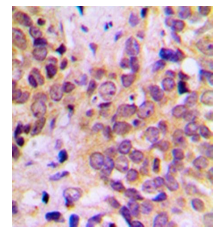
## Product Datasheet

### GSK3 beta antibody orb256575

<b>Description</b>	Rabbit polyclonal antibody to GSK3 beta
<b>Species/Host</b>	Rabbit
<b>Reactivity</b>	Human, Mouse, Porcine, Rat, Sheep, Zebrafish
<b>Conjugation</b>	Unconjugated
<b>Custom conjugations</b>	Unconjugated, HRP
<b>Tested Applications</b>	IHC-P, IP, WB
<b>Immunogen</b>	KLH-conjugated synthetic peptide encompassing a sequence within the N-term region of human GSK3 beta. The exact sequence is proprietary. Please contact us for the immunogen region. The peptide is available as <b>orb256865</b> .
<b>Target</b>	GSK3 beta. Recognizes endogenous levels of GSK3 beta protein.
<b>Form/Appearance</b>	Liquid in 0.42% Potassium phosphate, 0.87% Sodium chloride, pH 7.3, 30% glycerol, and 0.01% sodium azide.
<b>Storage</b>	Store at 4°C. Upon delivery aliquot and store at -20°C for one year. Avoid freeze/thaw cycles.
<b>Note</b>	For research use only.
<b>Isotype</b>	IgG
<b>Clonality</b>	Polyclonal
<b>Purity</b>	The antibody was purified by immunogen affinity chromatography.
<b>Uniprot ID</b>	<b>P49841</b> (Human); <b>Q9WV60</b> (Mouse); <b>P18266</b> (Rat)
<b>Entrez</b>	<b>2932</b>
<b>Dilution Range</b>	WB: 1:500-1000, IHC-P: 1:100-200, IP: 1:10-100
<b>Expiration Date</b>	12 months from date of receipt.



Western blot analysis of MDA-MB-435 (Lane1), Raw264.7 (Lane2) whole cell using GSK3 beta antibody



Immunohistochemical analysis of formalin-fixed and paraffin-embedded human prostate cancer tissue using GSK3 beta antibody