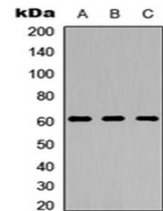


Product Datasheet

GPR123 antibody orb256568

Description	Rabbit polyclonal antibody to GPR123
Species/Host	Rabbit
Reactivity	Human, Mouse, Rat
Conjugation	Unconjugated
Custom conjugations	Unconjugated, HRP
Tested Applications	WB
Immunogen	KLH-conjugated synthetic peptide encompassing a sequence within the C-term region of human GPR123. The exact sequence is proprietary. Please contact us for the immunogen region. The peptide is available as orb256858 .
Target	GPR123. Recognizes endogenous levels of GPR123 protein.
Form/Appearance	Liquid in 0.42% Potassium phosphate, 0.87% Sodium chloride, pH 7.3, 30% glycerol, and 0.01% sodium azide.
Storage	Store at 4°C. Upon delivery aliquot and store at -20°C for one year. Avoid freeze/thaw cycles.
Note	For research use only.
Isotype	IgG
Clonality	Polyclonal
Purity	The antibody was purified by immunogen affinity chromatography.
Uniprot ID	Q86SQ6 (Human)
Entrez	84435
Dilution Range	WB: 1:500-1000
Expiration Date	12 months from date of receipt.



Western blot analysis of HeLa (Lane1), Raw264.7 (Lane2), PC12 (Lane3) whole cell using GPR123 antibody