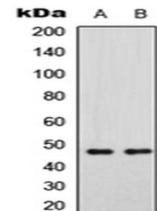


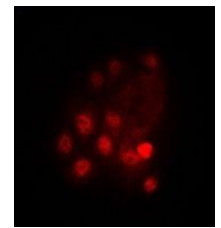
Product Datasheet

GATA3 (phospho-S308) antibody orb256554

Description	Rabbit polyclonal antibody to GATA3 (phospho-S308)
Species/Host	Rabbit
Reactivity	Feline, Human, Mouse, Porcine, Zebrafish
Conjugation	Unconjugated
Custom conjugations	Unconjugated, HRP
Tested Applications	ICC, IF, WB
Immunogen	KLH-conjugated synthetic peptide encompassing a sequence within the center region of human GATA3 (pS308). The exact sequence is proprietary. Please contact us for the immunogen region. The peptide is available as orb256844 .
Target	GATA3. Recognizes endogenous levels of GATA3 (pS308) protein
Form/Appearance	Liquid in 0.42% Potassium phosphate, 0.87% Sodium chloride, pH 7.3, 30% glycerol, and 0.01% sodium azide.
Storage	Store at 4°C. Upon delivery aliquot and store at -20°C for one year. Avoid freeze/thaw cycles.
Note	For research use only.
Isotype	IgG
Clonality	Polyclonal
Purity	The antibody was purified by immunogen affinity chromatography.
Uniprot ID	P23771 (Human); P23772 (Mouse)
Entrez	2625
Dilution Range	WB: 1:500-1000, IF/ICC: 1:100-500
Expiration Date	12 months from date of receipt.



Western blot analysis of SHSY5Y (Lane1), mouse brain (Lane2) whole cell using GATA3 (phospho-S308) antibody



Immunofluorescence analysis of HuvEc cells using GATA3 (phospho-S308) antibody