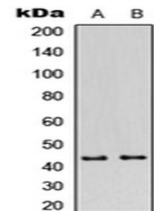


Product Datasheet

GATA1 (phospho-S310) antibody orb256552

Description	Rabbit polyclonal antibody to GATA1 (phospho-S310)
Species/Host	Rabbit
Reactivity	Human, Monkey, Mouse, Porcine, Rat, Sheep
Conjugation	Unconjugated
Custom conjugations	Unconjugated, HRP
Tested Applications	ICC, IF, WB
Immunogen	KLH-conjugated synthetic peptide encompassing a sequence within the C-term region of human GATA1 (pS310). The exact sequence is proprietary. Please contact us for the immunogen region. The peptide is available as orb256842 .
Target	GATA1. Recognizes endogenous levels of GATA1 (pS310) protein
Form/Appearance	Liquid in 0.42% Potassium phosphate, 0.87% Sodium chloride, pH 7.3, 30% glycerol, and 0.01% sodium azide.
Storage	Store at 4°C. Upon delivery aliquot and store at -20°C for one year. Avoid freeze/thaw cycles.
Note	For research use only.
Isotype	IgG
Clonality	Polyclonal
Purity	The antibody was purified by immunogen affinity chromatography.
Uniprot ID	P15976 (Human); P17679 (Mouse); P43429 (Rat)
Entrez	2623
Dilution Range	WB: 1:500-1000, IF/ICC: 1:100-500
Expiration Date	12 months from date of receipt.



Western blot analysis of HeLa (Lane1), HEK293T (Lane2) whole cell using GATA1 (phospho-S310) antibody



Immunofluorescence analysis of MCF7 cells using GATA1 (phospho-S310) antibody