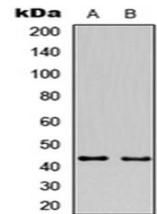


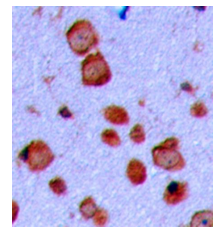
Product Datasheet

GAP43 antibody orb256550

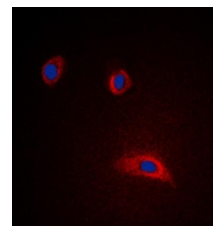
Description	Rabbit polyclonal antibody to GAP43
Species/Host	Rabbit
Reactivity	Feline, Human, Monkey, Mouse, Rat, Zebrafish
Conjugation	Unconjugated
Custom conjugations	Unconjugated, HRP
Tested Applications	ICC, IF, IHC-P, WB
Immunogen	KLH-conjugated synthetic peptide encompassing a sequence within the N-term region of human GAP43. The exact sequence is proprietary. Please contact us for the immunogen region. The peptide is available as orb256840 .
Target	GAP43. Recognizes endogenous levels of GAP43 protein.
Form/Appearance	Liquid in 0.42% Potassium phosphate, 0.87% Sodium chloride, pH 7.3, 30% glycerol, and 0.01% sodium azide.
Storage	Store at 4°C. Upon delivery aliquot and store at -20°C for one year. Avoid freeze/thaw cycles.
Note	For research use only.
Isotype	IgG
Clonality	Polyclonal
Purity	The antibody was purified by immunogen affinity chromatography.
Uniprot ID	P17677 (Human); P06837 (Mouse); P07936 (Rat)
Entrez	2596
Dilution Range	WB: 1:500-1000, IHC-P: 1:100-200, IF/ICC: 1:100-500
Expiration Date	12 months from date of receipt.



Western blot analysis of HeLa (Lane1), mouse brain (Lane2) whole cell using GAP43 antibody



Immunohistochemical analysis of formalin-fixed and paraffin-embedded human brain tissue using GAP43 antibody



Immunofluorescence analysis of HeLa cells lysates using GAP43 antibody