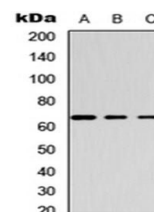


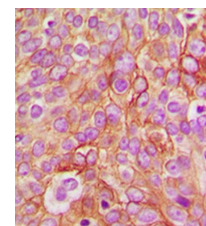
## Product Datasheet

### GABRB1 (phospho-S434) antibody orb256547

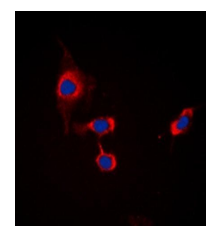
<b>Description</b>	Rabbit polyclonal antibody to GABRB1 (phospho-S434)
<b>Species/Host</b>	Rabbit
<b>Reactivity</b>	Human, Mouse, Rat
<b>Conjugation</b>	Unconjugated
<b>Custom conjugations</b>	Unconjugated, Biotin, FITC, HRP, CF647, CF488A, CF594, CF405M
<b>Tested Applications</b>	ICC, IF, IHC-P, WB
<b>Immunogen</b>	KLH-conjugated synthetic peptide encompassing a sequence within the C-term region of human GABRB1 (pS434). The exact sequence is proprietary. Please contact us for the immunogen region. The peptide is available as <b>orb256837</b> .
<b>Target</b>	GABRB1. Recognizes endogenous levels of GABRB1 (pS434) protein.
<b>Form/Appearance</b>	Liquid in 0.42% Potassium phosphate, 0.87% Sodium chloride, pH 7.3, 30% glycerol, and 0.01% sodium azide.
<b>Storage</b>	Store at 4°C. Upon delivery aliquot and store at -20°C for one year. Avoid freeze/thaw cycles.
<b>Note</b>	For research use only.
<b>Isotype</b>	IgG
<b>Clonality</b>	Polyclonal
<b>Purity</b>	The antibody was purified by immunogen affinity chromatography.
<b>Uniprot ID</b>	<b>P18505</b> (Human); <b>P50571</b> (Mouse); <b>P15431</b> (Rat)
<b>Entrez</b>	<b>2560</b>
<b>Dilution Range</b>	WB: 1:500-1000, IHC-P: 1:100-200, IF/ICC: 1:100-500
<b>Expiration Date</b>	12 months from date of receipt.



Western blot analysis of HeLa (Lane1), mouse brain (Lane2), rat brain (Lane3) whole cell using GABRB1 (phospho-S434) antibody



Immunohistochemical analysis of formalin-fixed and paraffin-embedded human breast cancer tissue using GABRB1 (phospho-S434) antibody



Immunofluorescence analysis of MCF7 cells lysates using GABRB1 (phospho-S434) antibody