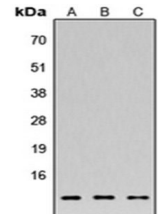


## Product Datasheet

### FAM215A antibody orb256533

<b>Description</b>	Rabbit polyclonal antibody to FAM215A
<b>Species/Host</b>	Rabbit
<b>Reactivity</b>	Human, Mouse, Rat
<b>Conjugation</b>	Unconjugated
<b>Custom conjugations</b>	Unconjugated, Biotin, FITC, HRP, CF647, CF488A, CF594, CF405M
<b>Tested Applications</b>	WB
<b>Immunogen</b>	KLH-conjugated synthetic peptide encompassing a sequence within the C-term region of human 42096. The exact sequence is proprietary. Please contact us for the immunogen region. The peptide is available as <b>orb256823</b> .
<b>Target</b>	FAM215A. Recognizes endogenous levels of 42096 protein.
<b>Form/Appearance</b>	Liquid in 0.42% Potassium phosphate, 0.87% Sodium chloride, pH 7.3, 30% glycerol, and 0.01% sodium azide.
<b>Storage</b>	Store at 4°C. Upon delivery aliquot and store at -20°C for one year. Avoid freeze/thaw cycles.
<b>Note</b>	For research use only.
<b>Isotype</b>	IgG
<b>Clonality</b>	Polyclonal
<b>Purity</b>	The antibody was purified by immunogen affinity chromatography.
<b>Uniprot ID</b>	<b>Q9Y5M1</b> (Human)
<b>Entrez</b>	<b>23591</b>
<b>Dilution Range</b>	WB: 1:500-1000
<b>Expiration Date</b>	12 months from date of receipt.



Western blot analysis of HEK293T (Lane1), NS-1 (Lane2), H9C2 (Lane3) whole cell using FAM215A antibody