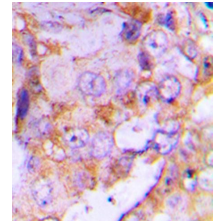


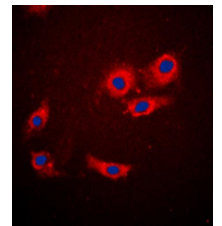
Product Datasheet

4EBP1 antibody orb256512

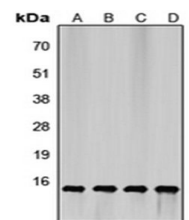
Description	Rabbit polyclonal antibody to 4EBP1
Species/Host	Rabbit
Reactivity	Human, Mouse, Porcine, Rat, Zebrafish
Conjugation	Unconjugated
Custom conjugations	Unconjugated, HRP
Tested Applications	ICC, IF, IHC-P, WB
Immunogen	KLH-conjugated synthetic peptide encompassing a sequence within the N-term region of human 4EBP1. The exact sequence is proprietary. Please contact us for the immunogen region. The peptide is available as orb256802 .
Target	4EBP1. Recognizes endogenous levels of 4EBP1 protein.
Form/Appearance	Liquid in 0.42% Potassium phosphate, 0.87% Sodium chloride, pH 7.3, 30% glycerol, and 0.01% sodium azide.
Storage	Store at 4°C. Upon delivery aliquot and store at -20°C for one year. Avoid freeze/thaw cycles.
Note	For research use only.
Isotype	IgG
Clonality	Polyclonal
Purity	The antibody was purified by immunogen affinity chromatography.
Uniprot ID	Q13541 (Human); Q60876 (Mouse); Q62622 (Rat)
Entrez	1978
Dilution Range	WB: 1:500-1000, IHC-P: 1:100-200, IF/ICC: 1:100-500
Expiration Date	12 months from date of receipt.



Immunohistochemical analysis of formalin-fixed and paraffin-embedded human lung cancer tissue using 4EBP1 antibody



Immunofluorescence analysis of MCF7 cells lysates using 4EBP1 antibody



Western blot analysis of HEK293T (Lane1), HepG2 (Lane2), mouse brain (Lane3), rat liver (Lane4) whole cell lysing 4EBP1 antibody