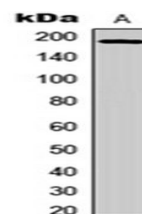


Product Datasheet

EGFR (phospho-Y1069) antibody orb256508

Description	Rabbit polyclonal antibody to EGFR (phospho-Y1069)
Species/Host	Rabbit
Reactivity	Human, Monkey, Mouse, Porcine
Conjugation	Unconjugated
Custom conjugations	Unconjugated, HRP
Tested Applications	WB
Immunogen	KLH-conjugated synthetic peptide encompassing a sequence within the C-term region of human EGFR (pY1069). The exact sequence is proprietary. Please contact us for the immunogen region. The peptide is available as orb256798 .
Target	EGFR. Recognizes endogenous levels of EGFR (pY1069) protein.
Form/Appearance	Liquid in 0.42% Potassium phosphate, 0.87% Sodium chloride, pH 7.3, 30% glycerol, and 0.01% sodium azide.
Storage	Store at 4°C. Upon delivery aliquot and store at -20°C for one year. Avoid freeze/thaw cycles.
Note	For research use only.
Isotype	IgG
Clonality	Polyclonal
Purity	The antibody was purified by immunogen affinity chromatography.
Uniprot ID	P00533 (Human); Q01279 (Mouse)
Entrez	1956
Dilution Range	WB: 1:500-1000
Expiration Date	12 months from date of receipt.



Western blot analysis of HEK293T UV-treated (Lane1) whole cell using EGFR (phospho-Y1069) antibody