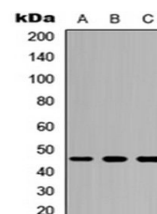


Product Datasheet

CD116 antibody orb256474

Description	Rabbit polyclonal antibody to CD116
Species/Host	Rabbit
Reactivity	Human, Mouse, Rat
Conjugation	Unconjugated
Custom conjugations	Unconjugated, HRP
Tested Applications	WB
Immunogen	KLH-conjugated synthetic peptide encompassing a sequence within the center region of human CD116. The exact sequence is proprietary. Please contact us for the immunogen region. The peptide is available as orb256764 .
Target	CD116. Recognizes endogenous levels of CD116 protein.
Form/Appearance	Liquid in 0.42% Potassium phosphate, 0.87% Sodium chloride, pH 7.3, 30% glycerol, and 0.01% sodium azide.
Storage	Store at 4°C. Upon delivery aliquot and store at -20°C for one year. Avoid freeze/thaw cycles.
Note	For research use only.
Isotype	IgG
Clonality	Polyclonal
Purity	The antibody was purified by immunogen affinity chromatography.
Uniprot ID	P15509 (Human); Q00941 (Mouse)
Entrez	1438
Dilution Range	WB: 1:500-1000
Expiration Date	12 months from date of receipt.



Western blot analysis of HEK293T (Lane1), Raw264.7 (Lane2), H9C2 (Lane3) whole cell using CD116 antibody