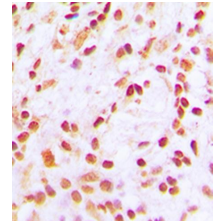


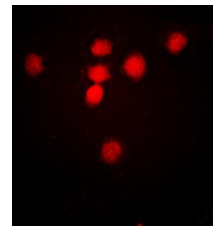
## Product Datasheet

### CBP antibody orb256470

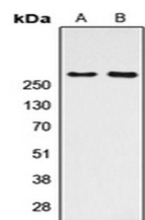
<b>Description</b>	Rabbit polyclonal antibody to CBP
<b>Species/Host</b>	Rabbit
<b>Reactivity</b>	Human, Mouse, Rat
<b>Conjugation</b>	Unconjugated
<b>Custom conjugations</b>	Unconjugated, HRP
<b>Tested Applications</b>	ICC, IF, IHC-P, WB
<b>Immunogen</b>	KLH-conjugated synthetic peptide encompassing a sequence within the center region of human CBP (AcK1535). The exact sequence is proprietary. Please contact us for the immunogen region. The peptide is available as <b>orb256760</b> .
<b>Target</b>	CBP. Recognizes endogenous levels of CBP (AcK1535) protein.
<b>Form/Appearance</b>	Liquid in 0.42% Potassium phosphate, 0.87% Sodium chloride, pH 7.3, 30% glycerol, and 0.01% sodium azide.
<b>Storage</b>	Store at 4°C. Upon delivery aliquot and store at -20°C for one year. Avoid freeze/thaw cycles.
<b>Note</b>	For research use only.
<b>Isotype</b>	IgG
<b>Clonality</b>	Polyclonal
<b>Purity</b>	The antibody was purified by immunogen affinity chromatography.
<b>Uniprot ID</b>	<b>Q92793</b> (Human); <b>P45481</b> (Mouse); <b>Q6JHU9</b> (Rat)
<b>Entrez</b>	<b>1387</b>
<b>Dilution Range</b>	WB: 1:500-1000, IHC-P: 1:100-200, IF/ICC: 1:100-500
<b>Expiration Date</b>	12 months from date of receipt.



Immunohistochemical analysis of formalin-fixed and paraffin-embedded human lung cancer tissue using CBP antibody



Immunofluorescence analysis of HeLa cells lysates using CBP antibody



Western blot analysis of HeLa (Lane1), NIH3T3 (Lane2) whole cell using CBP antibody