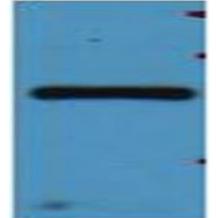


Product Datasheet

mStrawberry antibody orb256074

Description	Rabbit polyclonal antibody to mStrawberry
Species/Host	Rabbit
Conjugation	Unconjugated
Tested Applications	ICC, IF, IHC-P, IP, WB
Target	mStrawberry
Form/Appearance	PBS (without Mg ²⁺ and Ca ²⁺), pH 7.4, 150mM NaCl, 0.02% sodium azide and 50% glycerol
Concentration	1 mg/ml
Storage	Aliquot and store at -20°C.
Note	For research use only.
Isotype	IgG
Clonality	Polyclonal
Purity	Affinity purification
Expiration Date	12 months from date of receipt.



Western blot analysis of mStrawberry recombinant protein, using #orb256074 diluted at 1:5000.