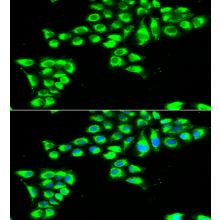


## Product Datasheet

### CLDN2 antibody orb255292

<b>Description</b>	Rabbit polyclonal antibody to CLDN2
<b>Species/Host</b>	Rabbit
<b>Reactivity</b>	Human
<b>Conjugation</b>	Unconjugated
<b>Tested Applications</b>	ICC, IF, WB
<b>Immunogen</b>	KLH conjugated synthetic peptide
<b>Target</b>	CLDN2
<b>Form/Appearance</b>	PBS (without Mg <sup>2+</sup> and Ca <sup>2+</sup> ), pH 7.4, 150mM NaCl, 0.02% sodium azide and 50% glycerol
<b>Concentration</b>	1.0 mg/ml
<b>Storage</b>	Aliquot and store at -20°C.
<b>Note</b>	For research use only.
<b>Isotype</b>	IgG
<b>Clonality</b>	Polyclonal
<b>Purity</b>	Affinity purification
<b>MW</b>	24 kDa
<b>Uniprot ID</b>	<b>P57739</b>
<b>Entrez</b>	<b>9075</b>
<b>Dilution Range</b>	WB: 1:500 - 1:2000, IF/ICC: 1:50 - 1:100
<b>Expiration Date</b>	12 months from date of receipt.



Immunofluorescence analysis of HeLa cell using CLDN2 antibody.