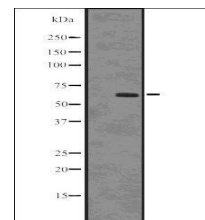


Product Datasheet

SQSTM1/p62 (Phospho-Ser403) antibody orb336572

Description	Rabbit polyclonal antibody to NUP76
Species/Host	Rabbit
Reactivity	Human, Mouse, Rat
Conjugation	Unconjugated
Tested Applications	IHC-P, WB
Immunogen	A synthesized peptide derived from human SQSTM1/p62 (Phospho-Ser403)
Target	SQSTM1/p62 (Phospho-Ser403). Phospho-SQSTM1/p62 (Ser403) Antibody detects endogenous levels of SQSTM1/p62 only when phosphorylated at Ser403
Form/Appearance	PBS, pH 7.4, 150mM NaCl, 0.02% sodium azide and 50% glycerol.
Storage	Store at 4°C for up to two weeks. For long term storage, aliquot and store at -20°C, avoid freeze/thaw cycles.
Note	For research use only.
Isotype	IgG
Clonality	Polyclonal
Purity	Immunogen affinity purified
Dilution Range	WB: 1:1000-3016
Expiration Date	12 months from date of receipt.



Western blot analysis of HepG2 whole cell lysates using SQSTM1/p62 -Phospho-Ser403-antibody