

Product Datasheet

Calreticulin Antibody (orb97537)

Catalog Number	orb97537
Category	Antibodies
Description	Mouse monoclonal antibody to Calreticulin
Target	Calreticulin
Clonality	Monoclonal
Species/Host	Mouse
Isotype	Mouse IgG2a
Conjugation	Unconjugated
Reactivity	Human, Mouse
Concentration	Approximately 1mg/ml (varies from batch to batch). Please inquire for precise concentration.
Buffer/Preservatives	Ascitic fluid containing 0.03% sodium azide.
Immunogen	Synthetic peptide corresponding to aa (EEEDVPGQAKDELG) of human Calreticulin, conjugated to KLH.
UniProt ID	P27797
MW	48kDa
Tested applications	ICC, IHC, WB
Dilution range	WB: 1/500 - 1/2000; IHC: 1/100 - 1/500; IF/ICC: 1/50 - 1/500; FCM: 1/200 - 1/400; ELISA: 1/10000

Biorbyt Ltd.

7 Signet Court, Swann Road
Cambridge
CB5 8LA
United Kingdom

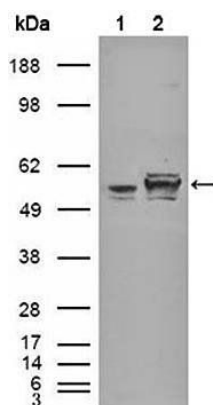
Email: info@biorbyt.com, support@biorbyt.com
Phone: [+44 \(0\)1223 859353](tel:+44(0)1223859353) | Fax: [+1 \(415\) 651-8558](tel:+1(415)651-8558)

Biorbyt LLC

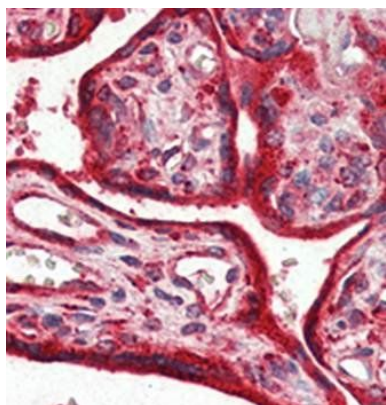
68 TW Alexander Drive
Research Triangle Park
Durham
NC 27713
United States

Email: info@biorbyt.com, support@biorbyt.com
Phone: [+1 \(415\) 906-5211](tel:+1(415)906-5211) | Fax: [+1 \(415\) 651-8558](tel:+1(415)651-8558)

Antibody Type	Primary Antibody
Clone Number	1G6A7
Storage	Maintain refrigerated at 2-8°C for up to 2 weeks. For long term storage store at -20°C in small aliquots to prevent freeze-thaw cycles.
Note	For research use only
Entrez	811
Expiration Date	12 months from date of receipt.



Western blot analysis of HEK293T cells transfected with the pCMV6-ENTRY control (Lane1) and pCMV6-ENTRY Calreticulin cDNA (Lane2) using Calreticulin antibody



Immunohistochemical analysis of formalin fixed and paraffin-embedded human placenta tissues using Calreticulin antibody

Biorbyt Ltd.

7 Signet Court, Swann Road
Cambridge
CB5 8LA
United Kingdom

Email: info@biorbyt.com, support@biorbyt.com

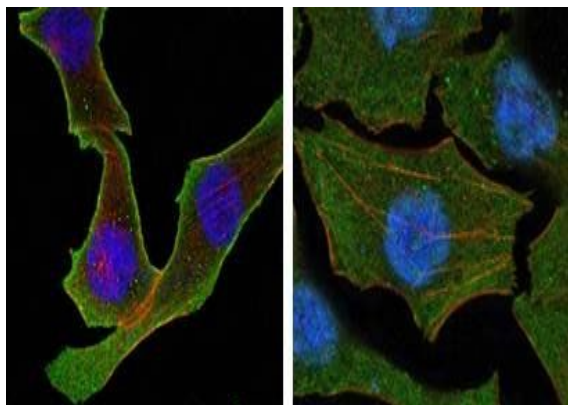
Phone: +44 (0)1223 859353 | Fax: +1 (415) 651-8558

Biorbyt LLC

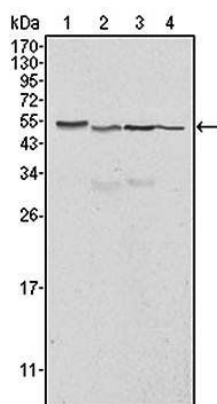
68 TW Alexander Drive
Research Triangle Park
Durham
NC 27713
United States

Email: info@biorbyt.com, support@biorbyt.com

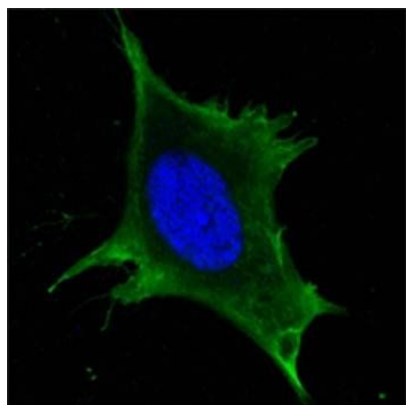
Phone: +1 (415) 906-5211 | Fax: +1 (415) 651-8558



Confocal immunofluorescence analysis of SKBR-3 (left) and A549 (right) cells using Calreticulin antibody



Western blot analysis of HeLa (Lane1), A549 (Lane2), NTERA2 (Lane3) and MCF-7 (Lane4) cell lysate using Calreticulin antibody



Confocal immunofluorescence analysis of 3T3-L1 cells using Calreticulin antibody

Biorbyt Ltd.

7 Signet Court, Swann Road
Cambridge
CB5 8LA
United Kingdom

Email: info@biorbyt.com, support@biorbyt.com

Phone: [+44 \(0\)1223 859353](tel:+44(0)1223859353) | Fax: [+1 \(415\) 651-8558](tel:+1(415)651-8558)

Biorbyt LLC

68 TW Alexander Drive
Research Triangle Park
Durham
NC 27713
United States

Email: info@biorbyt.com, support@biorbyt.com

Phone: [+1 \(415\) 906-5211](tel:+1(415)906-5211) | Fax: [+1 \(415\) 651-8558](tel:+1(415)651-8558)