

## Product Datasheet

### PDE4D Rabbit Monoclonal Antibody (orb865860)

|                             |  |
|-----------------------------|--|
| <b>Catalog Number</b>       | orb865860  |
| <b>Category</b>             | Antibodies   |
| <b>Description</b>          | PDE4D Rabbit Monoclonal Antibody   |
| <b>Target</b>               | 3',5'-cyclic-AMP phosphodiesterase 4D  |
| <b>Clonality</b>            | Monoclonal   |
| <b>Species/Host</b>         | Rabbit   |
| <b>Isotype</b>              | IgG  |
| <b>Conjugation</b>          | Unconjugated   |
| <b>Reactivity</b>           | Human  |
| <b>Form/Appearance</b>      | Liquid   |
| <b>Concentration</b>        | 0.5mg/ml   |
| <b>Buffer/Preservatives</b> | Rabbit IgG in stabilizing components, phosphate buffered saline, pH 7.4, 150mM NaCl, 0.02% sodium azide and 50% glycerol. *This antibody is supplied in a stabilized formulation. Compatibility with conjugation reactions depends on the chemistry of the conjugation method used. For conjugation methods that are not compatible with the stabilizing components present in this formulation, a carrier-free antibody format is required. |
| <b>Purification</b>         | Affinity-chromatography  |
| <b>Immunogen</b>            | A synthesized peptide derived from human PDE4D   |
| <b>UniProt ID</b>           | <b>Q08499</b>  |

**Biorbyt Ltd.**

7 Signet Court, Swann Road  
Cambridge  
CB5 8LA  
United Kingdom

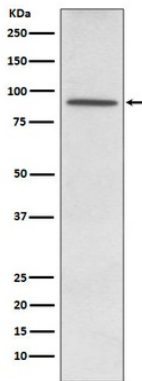
Email: [info@biorbyt.com](mailto:info@biorbyt.com), [support@biorbyt.com](mailto:support@biorbyt.com)  
Phone: [+44 \(0\)1223 859353](tel:+44(0)1223859353) | Fax: [+1 \(415\) 651-8558](tel:+1(415)651-8558)

**Biorbyt LLC**

68 TW Alexander Drive  
Research Triangle Park  
Durham  
NC 27713-2847  
United States

Email: [info@biorbyt.com](mailto:info@biorbyt.com), [support@biorbyt.com](mailto:support@biorbyt.com)  
Phone: [+1 \(415\) 906-5211](tel:+1(415)906-5211) | Fax: [+1 \(415\) 651-8558](tel:+1(415)651-8558)

|                            |   |
|----------------------------|---|
| <b>MW</b>                  | 85 kDa  |
| <b>Tested applications</b> | WB  |
| <b>Dilution range</b>      | WB 1:500-2000   |
| <b>Antibody Type</b>       | Primary Antibody  |
| <b>Clone Number</b>        | B30R38  |
| <b>Storage</b>             | Maintain refrigerated at 2-8°C for up to 2 weeks. For long term storage store at -20°C in small aliquots to prevent freeze-thaw cycles. |
| <b>Note</b>                | For research use only   |
| <b>Expiration Date</b>     | 12 months from date of receipt.   |



Western blot analysis of PDE4D expression in K562 cell lysate.

**Biorbyt Ltd.**

7 Signet Court, Swann Road  
Cambridge  
CB5 8LA  
United Kingdom

Email: [info@biorbyt.com](mailto:info@biorbyt.com), [support@biorbyt.com](mailto:support@biorbyt.com)

Phone: [+44 \(0\)1223 859353](tel:+44(0)1223859353) | Fax: [+1 \(415\) 651-8558](tel:+1(415)651-8558)

**Biorbyt LLC**

68 TW Alexander Drive  
Research Triangle Park  
Durham  
NC 27713-2847  
United States

Email: [info@biorbyt.com](mailto:info@biorbyt.com), [support@biorbyt.com](mailto:support@biorbyt.com)

Phone: [+1 \(415\) 906-5211](tel:+1(415)906-5211) | Fax: [+1 \(415\) 651-8558](tel:+1(415)651-8558)