

Product Datasheet

Human beta Actin protein (orb84841)

Catalog Number	orb84841
Category	Proteins
Description	Human beta Actin protein
Target	Human beta Actin
Conjugation	Unconjugated
Form/Appearance	Lyophilised: PBS pH 7.5
Concentration	0.5 mg/ml
Purity	95% by SDS-PAGE
Protein Sequence	MDDDIAALVVD NGS GMCKAGF AGDDAPRAVF PSIVGRPRHQ GVMVGMGQ KDSYVGDEAQ SKRGILTLKYPI EHGIVTNWD DMEKIWHHT FYNELRVAPE EHPVLLTEAPL NPKANREKMTQ IMFETFNTPAMYV AIQAVLSLYASGRT TGIVMDSGDGVTH TVPIYEGYALPHAIL RLDLAGRDLTDYLM KILTERGYSFTTTAE REIVRDIKEKLCYV ALDFEQEMAT AASSSSLEKS YELPDGQV ITIGNERFR CPEALFQPSF LGMESCGIH ETTFNSIMK CDVDIRKDL YANTVLSGGTTMY PGIADRMQKEITA LAPSTMKIKIIPPERK YSVWIGGSILASLS TFQQMWISKQE YDESGPSIVHR KCFLEHHHHHH
UniProt ID	P60709
MW	42.8 kDa
Tested applications	SDS-PAGE, WB
Source	Human gene
Biological Origin	E.coli

Biorbyt Ltd.

7 Signet Court, Swann Road
Cambridge
CB5 8LA
United Kingdom

Email: info@biorbyt.com, support@biorbyt.com

Phone: [+44 \(0\)1223 859353](tel:+44(0)1223859353) | Fax: [+1 \(415\) 651-8558](tel:+1(415)651-8558)

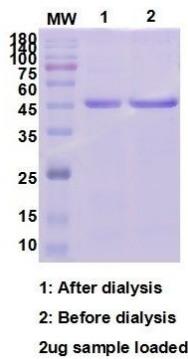
Biorbyt LLC

68 TW Alexander Drive
Research Triangle Park
Durham
NC 27713
United States

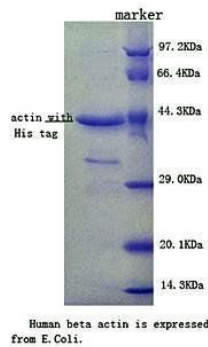
Email: info@biorbyt.com, support@biorbyt.com

Phone: [+1 \(415\) 906-5211](tel:+1(415)906-5211) | Fax: [+1 \(415\) 651-8558](tel:+1(415)651-8558)

Storage	Store at 4°C for short term and -20°C for long term storage
Note	For research use only
Entrez	60
NCBI	001092, 0010921
Expiration Date	6 months from date of receipt.



beta-action protein purification report



SDS-PAGE analysis of Human beta actin protein

Biorbyt Ltd.

7 Signet Court, Swann Road
Cambridge
CB5 8LA
United Kingdom

Email: info@biorbyt.com, support@biorbyt.com

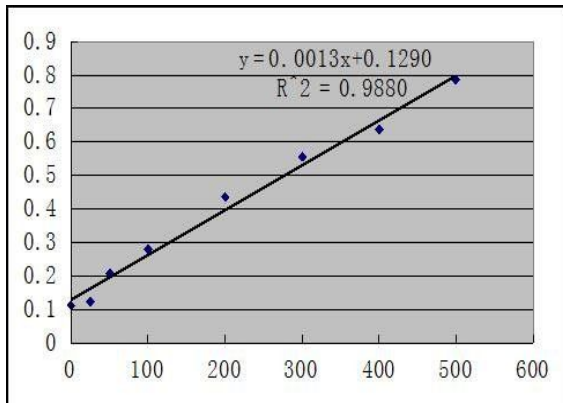
Phone: [+44 \(0\)1223 859353](tel:+44(0)1223859353) | Fax: [+1 \(415\) 651-8558](tel:+1(415)651-8558)

Biorbyt LLC

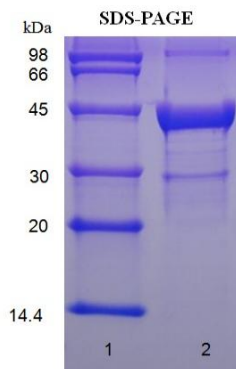
68 TW Alexander Drive
Research Triangle Park
Durham
NC 27713
United States

Email: info@biorbyt.com, support@biorbyt.com

Phone: [+1 \(415\) 906-5211](tel:+1(415)906-5211) | Fax: [+1 \(415\) 651-8558](tel:+1(415)651-8558)



BCA assay: The concentration of human beta actin is 1.27mg/ml~1.36mg/ml



SDS Page analysis of beta actin protein. Lane 1: Protein standard markers. Lane 2: 5ug beta-actin, under reducing conditions.

Biorbyt Ltd.

7 Signet Court, Swann Road
Cambridge
CB5 8LA
United Kingdom

Email: info@biorbyt.com, support@biorbyt.com

Phone: +44 (0)1223 859353 | Fax: +1 (415) 651-8558

Biorbyt LLC

68 TW Alexander Drive
Research Triangle Park
Durham
NC 27713
United States

Email: info@biorbyt.com, support@biorbyt.com

Phone: +1 (415) 906-5211 | Fax: +1 (415) 651-8558