

Product Datasheet

PNPLA2 Rabbit Polyclonal Antibody (orb78393)

Catalog Number	orb78393
Category	Antibodies
Description	Rabbit polyclonal antibody to PNPLA2
Target	PNPLA2
Clonality	Polyclonal
Species/Host	Rabbit
Isotype	IgG
Conjugation	Unconjugated
Reactivity	Human
Predicted Reactivity	Mouse, Rat
Form/Appearance	Lyophilized power with 1% rAlbumin and 0.02% NaN ₃ .
Purification	Purified by antigen affinity column.
Immunogen	Recombinant fragment corresponding to 122-340aa of human PNPLA2.
MW	20kD
Tested applications	ELISA, IHC, WB
Dilution range	WB: 1:200-1:1,000
Application notes	Reconstitute in 100µL of sterile H ₂ O with 50% glycerol.

Biorbyt Ltd.

7 Signet Court, Swann Road
Cambridge
CB5 8LA
United Kingdom

Email: info@biorbyt.com, support@biorbyt.com

Phone: [+44 \(0\)1223 859353](tel:+44(0)1223859353) | Fax: [+1 \(415\) 651-8558](tel:+1(415)651-8558)

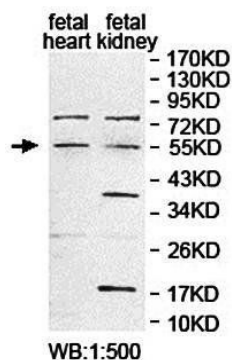
Biorbyt LLC

68 TW Alexander Drive
Research Triangle Park
Durham
NC 27713
United States

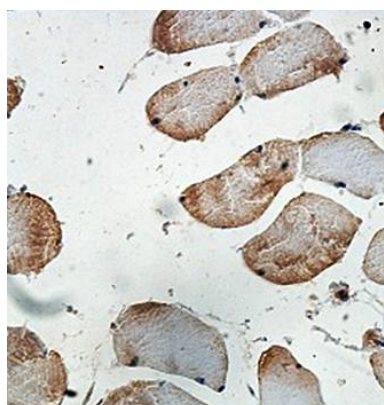
Email: info@biorbyt.com, support@biorbyt.com

Phone: [+1 \(415\) 906-5211](tel:+1(415)906-5211) | Fax: [+1 \(415\) 651-8558](tel:+1(415)651-8558)

Storage	Maintain refrigerated at 2-8°C for up to 2 weeks. For long term storage store at -20°C in small aliquots to prevent freeze-thaw cycles.
Note	For research use only
Expiration Date	12 months from date of receipt.



Western blot analysis of fetal heart and fetal kidney lysate using PNPLA2 antibody



Immunohistochemical analysis of formalin-fixed paraffin embedded fetal skeletal muscle showing membrane staining using PNPLA2 antibody

Biorbyt Ltd.

7 Signet Court, Swann Road
Cambridge
CB5 8LA
United Kingdom

Email: info@biorbyt.com, support@biorbyt.com

Phone: +44 (0)1223 859353 | Fax: +1 (415) 651-8558

Biorbyt LLC

68 TW Alexander Drive
Research Triangle Park
Durham
NC 27713
United States

Email: info@biorbyt.com, support@biorbyt.com

Phone: +1 (415) 906-5211 | Fax: +1 (415) 651-8558