

## Product Datasheet

# Phospho-GSK3 Alpha + Beta (Tyr279+Tyr216) Rabbit Polyclonal Antibody (orb783420)

<b>Catalog Number</b>	orb783420
<b>Category</b>	Antibodies
<b>Description</b>	Phospho-GSK3 Alpha + Beta (Tyr279+Tyr216) Rabbit Polyclonal Antibody
<b>Target</b>	GSK3B
<b>Clonality</b>	Polyclonal
<b>Species/Host</b>	Rabbit
<b>Isotype</b>	IgG
<b>Conjugation</b>	Unconjugated
<b>Reactivity</b>	Human, Mouse, Rat
<b>Predicted Reactivity</b>	Bovine, Canine, Equine, Gallus, Guinea pig, Porcine, Rabbit, Sheep
<b>Form/Appearance</b>	Liquid
<b>Concentration</b>	1mg/ml
<b>Buffer/Preservatives</b>	0.01M TBS (pH7.4) with 1% rAlbumin, 0.02% Proclin300 and 50% Glycerol.
<b>Purification</b>	Affinity purified by Protein A
<b>Immunogen</b>	KLH conjugated Synthesised phosphopeptide derived from human GSK-3 Beta around the phosphorylation site of Tyr216 VS(p-Y)IC
<b>UniProt ID</b>	<b>P49841</b>

**Biorbyt Ltd.**

7 Signet Court, Swann Road  
Cambridge  
CB5 8LA  
United Kingdom

Email: [info@biorbyt.com](mailto:info@biorbyt.com), [support@biorbyt.com](mailto:support@biorbyt.com)

Phone: [+44 \(0\)1223 859353](tel:+44(0)1223859353) | Fax: [+1 \(415\) 651-8558](tel:+1(415)651-8558)

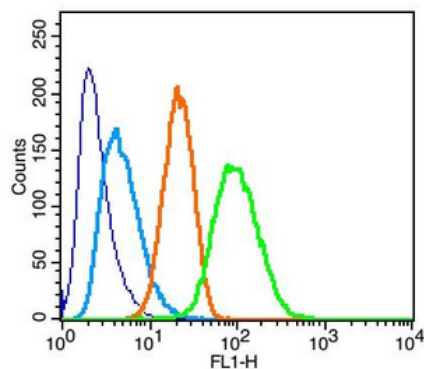
**Biorbyt LLC**

68 TW Alexander Drive  
Research Triangle Park  
Durham  
NC 27713-2847  
United States

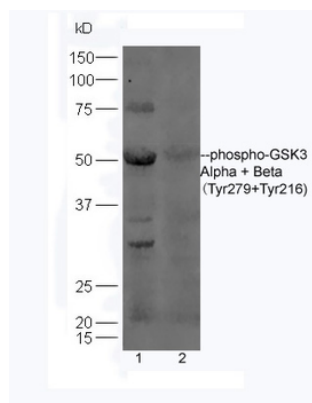
Email: [info@biorbyt.com](mailto:info@biorbyt.com), [support@biorbyt.com](mailto:support@biorbyt.com)

Phone: [+1 \(415\) 906-5211](tel:+1(415)906-5211) | Fax: [+1 \(415\) 651-8558](tel:+1(415)651-8558)

<b>MW</b>	47 kDa
<b>Tested applications</b>	WB
<b>Dilution range</b>	WB=1:500-2000
<b>Antibody Type</b>	Primary Antibody
<b>Storage</b>	Maintain refrigerated at 2-8°C for up to 2 weeks. For long term storage store at -20°C in small aliquots to prevent freeze-thaw cycles.
<b>Note</b>	For research use only
<b>Expiration Date</b>	12 months from date of receipt.



Positive control: RSC96, Isotype Control Antibody: Rabbit IgG, Secondary Antibody: Goat anti-rabbit IgG-FITC, dilution: 1:200 in 1X PBS containing 0.5% BSA, Primary Antibody catalog number: orb783420, dilution: 3 µl in 100 µl 1X PBS containing 0.5% BSA.



Sample: Lane 1: Brain (Mouse) Lysate at 30 ug, Lane 2: Testis (Mouse) Lysate at 30 ug, Primary: Anti-phospho-GSK3 Alpha + Beta (Tyr279+Tyr216) (orb783420) at 1:300 dilution, Secondary: HRP conjugated Goat-Anti-rabbit IgG (orb572747) at 1:5000 dilution, Predicted band size: 47/51 kD, Observed band size: 50 kD.

**Biorbyt Ltd.**

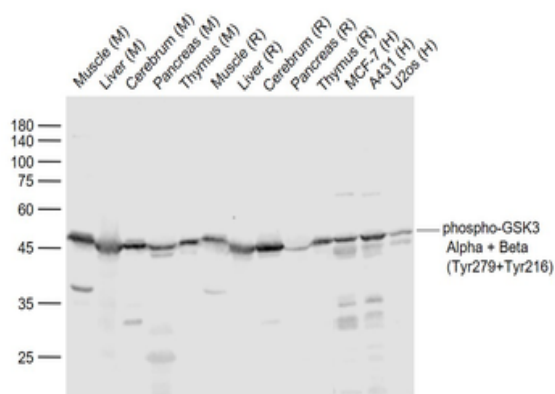
7 Signet Court, Swann Road  
Cambridge  
CB5 8LA  
United Kingdom

Email: [info@biorbyt.com](mailto:info@biorbyt.com), [support@biorbyt.com](mailto:support@biorbyt.com)  
Phone: +44 (0)1223 859353 | Fax: +1 (415) 651-8558

**Biorbyt LLC**

68 TW Alexander Drive  
Research Triangle Park  
Durham  
NC 27713-2847  
United States

Email: [info@biorbyt.com](mailto:info@biorbyt.com), [support@biorbyt.com](mailto:support@biorbyt.com)  
Phone: +1 (415) 906-5211 | Fax: +1 (415) 651-8558



Sample: Lane 1: Muscle (Mouse) Lysate at 40 ug, Lane 2: Liver (Mouse) Lysate at 40 ug, Lane 3: Cerebrum (Mouse) Lysate at 40 ug, Lane 4: Pancreas (Mouse) Lysate at 40 ug, Lane 5: Thymus (Mouse) Lysate at 40 ug, Lane 6: Muscle (Rat) Lysate at 40 ug, Lane 7: Liver (Rat) Lysate at 40 ug, Lane 8: Cerebrum (Rat) Lysate at 40 ug, Lane 9: Pancreas (Rat) Lysate at 40 ug, Lane 10: Thymus (Rat) Lysate at 40 ug, Lane 11: MCF-7 (Human) Cell Lysate at 30 ug, Lane 12: A431 (Human) Cell Lysate at 30 ug, Lane 13: U2os (Human) Cell Lysate at 30 ug, Primary: Anti-phospho-GSK3 Alpha + Beta (Tyr279+Tyr216) (orb783420) at 1/1000 dilution, Secondary: IRDye800CW Goat Anti-Rabbit IgG at 1/20000 dilution, Predicted band size: 47'51 kD, Observed band size: 47 kD.

**Biorbyt Ltd.**

7 Signet Court, Swann Road  
Cambridge  
CB5 8LA  
United Kingdom

Email: [info@biorbyt.com](mailto:info@biorbyt.com), [support@biorbyt.com](mailto:support@biorbyt.com)

Phone: +44 (0)1223 859353 | Fax: +1 (415) 651-8558

**Biorbyt LLC**

68 TW Alexander Drive  
Research Triangle Park  
Durham  
NC 27713-2847  
United States

Email: [info@biorbyt.com](mailto:info@biorbyt.com), [support@biorbyt.com](mailto:support@biorbyt.com)

Phone: +1 (415) 906-5211 | Fax: +1 (415) 651-8558