

## Product Datasheet

# Human Ribosomal Protein S6 Kinase Alpha 1 (RPS6Ka1) ELISA Kit (orb780998)

<b>Catalog Number</b>	orb780998
<b>Category</b>	Assays and Kits
<b>Description</b>	The test principle applied in this kit is Sandwich enzyme immunoassay. The microtiter plate provided in this kit has been pre-coated with an antibody specific to Ribosomal Protein S6 Kinase Alpha 1(RPS6Ka1).
<b>Reactivity</b>	Human
<b>Concentration</b>	20 ng/mL
<b>UniProt ID</b>	<b>Q15418</b>
<b>Tested applications</b>	ELISA
<b>Application notes</b>	standard: 20 ng/mL. Test principle: The test principle applied in this kit is Sandwich enzyme immunoassay. The microtiter plate provided in this kit has been pre-coated with an antibody specific to Human RPS6Ka1. Standards or samples are added to the appropriate microtiter plate wells then with a biotin-conjugated antibody specific to Human RPS6Ka1. Next, Avidin conjugated to Horseradish Peroxidase (HRP) is added to each microplate well and incubated. After TMB substrate solution is added, only those wells that contain Human RPS6Ka1, biotin-conjugated antibody and enzyme-conjugated Avidin will exhibit a change in color. The enzyme-substrate reaction is terminated by the addition of sulphuric acid solution and the color change is measured spectrophotometrically at a wavelength of 450nm ± 10nm. The concentration of Human RPS6Ka1 in the samples is then determined by comparing the OD of the samples to the standard curve
<b>Assay Type</b>	Sandwich
<b>Assay Time</b>	3.5h

**Biorbyt Ltd.**

7 Signet Court, Swann Road  
Cambridge  
CB5 8LA  
United Kingdom

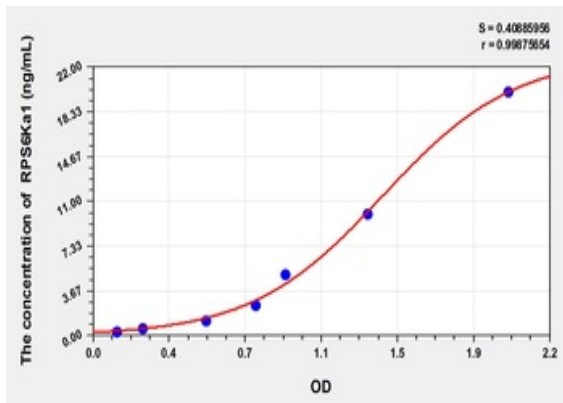
Email: [info@biorbyt.com](mailto:info@biorbyt.com), [support@biorbyt.com](mailto:support@biorbyt.com)  
Phone: [+44 \(0\)1223 859353](tel:+44(0)1223859353) | Fax: [+1 \(415\) 651-8558](tel:+1(415)651-8558)

**Biorbyt LLC**

68 TW Alexander Drive  
Research Triangle Park  
Durham  
NC 27713  
United States

Email: [info@biorbyt.com](mailto:info@biorbyt.com), [support@biorbyt.com](mailto:support@biorbyt.com)  
Phone: [+1 \(415\) 906-5211](tel:+1(415)906-5211) | Fax: [+1 \(415\) 651-8558](tel:+1(415)651-8558)

<b>Range</b>	0.32-20 ng/mL
<b>Sensitivity</b>	0.122 ng/mL
<b>Sample Types</b>	Tissue homogenates, cell lysates and other biological fluids.
<b>Note</b>	For research use only
<b>Expiration Date</b>	Please enquire.



Standard curve for orb780998 ELISA kit.

**Biorbyt Ltd.**

7 Signet Court, Swann Road  
Cambridge  
CB5 8LA  
United Kingdom

Email: [info@biorbyt.com](mailto:info@biorbyt.com), [support@biorbyt.com](mailto:support@biorbyt.com)

Phone: [+44 \(0\)1223 859353](tel:+44(0)1223859353) | Fax: [+1 \(415\) 651-8558](tel:+1(415)651-8558)

**Biorbyt LLC**

68 TW Alexander Drive  
Research Triangle Park  
Durham  
NC 27713  
United States

Email: [info@biorbyt.com](mailto:info@biorbyt.com), [support@biorbyt.com](mailto:support@biorbyt.com)

Phone: [+1 \(415\) 906-5211](tel:+1(415)906-5211) | Fax: [+1 \(415\) 651-8558](tel:+1(415)651-8558)