

Product Datasheet

Human L-Type Amino Acid Transporter 1 (y+LAT1) ELISA Kit (orb778573)

Catalog Number	orb778573
Category	Assays and Kits
Description	The test principle applied in this kit is Sandwich enzyme immunoassay. The microtiter plate provided in this kit has been pre-coated with an antibody specific to L-Type Amino Acid Transporter 1(y+LAT1).
Reactivity	Human
Concentration	20 ng/mL
UniProt ID	Q9UM01
Tested applications	ELISA
Application notes	standard: 20 ng/mL. Test principle: The test principle applied in this kit is Sandwich enzyme immunoassay. The microtiter plate provided in this kit has been pre-coated with an antibody specific to Human y+LAT1. Standards or samples are added to the appropriate microtiter plate wells then with a biotin-conjugated antibody specific to Human y+LAT1. Next, Avidin conjugated to Horseradish Peroxidase (HRP) is added to each microplate well and incubated. After TMB substrate solution is added, only those wells that contain Human y+LAT1, biotin-conjugated antibody and enzyme-conjugated Avidin will exhibit a change in color. The enzyme-substrate reaction is terminated by the addition of sulphuric acid solution and the color change is measured spectrophotometrically at a wavelength of 450nm \pm 10nm. The concentration of Human y+LAT1 in the samples is then determined by comparing the OD of the samples to the standard curve
Assay Type	Sandwich
Assay Time	3.5h

Biorbyt Ltd.

7 Signet Court, Swann Road
Cambridge
CB5 8LA
United Kingdom

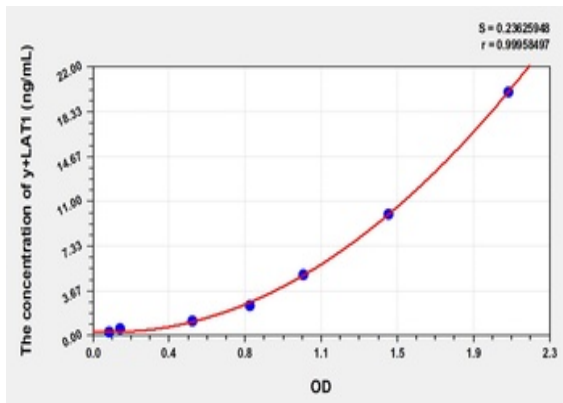
Email: info@biorbyt.com, support@biorbyt.com
Phone: [+44 \(0\)1223 859353](tel:+44(0)1223859353) | Fax: [+1 \(415\) 651-8558](tel:+1(415)651-8558)

Biorbyt LLC

68 TW Alexander Drive
Research Triangle Park
Durham
NC 27713
United States

Email: info@biorbyt.com, support@biorbyt.com
Phone: [+1 \(415\) 906-5211](tel:+1(415)906-5211) | Fax: [+1 \(415\) 651-8558](tel:+1(415)651-8558)

Range	0.32-20 ng/mL
Sensitivity	0.118 ng/mL
Sample Types	Tissue homogenates, cell lysates and other biological fluids.
Note	For research use only
Expiration Date	Please enquire.



Standard curve for orb778573 ELISA kit.

Biorbyt Ltd.

7 Signet Court, Swann Road
Cambridge
CB5 8LA
United Kingdom

Email: info@biorbyt.com, support@biorbyt.com

Phone: [+44 \(0\)1223 859353](tel:+44(0)1223859353) | Fax: [+1 \(415\) 651-8558](tel:+1(415)651-8558)

Biorbyt LLC

68 TW Alexander Drive
Research Triangle Park
Durham
NC 27713
United States

Email: info@biorbyt.com, support@biorbyt.com

Phone: [+1 \(415\) 906-5211](tel:+1(415)906-5211) | Fax: [+1 \(415\) 651-8558](tel:+1(415)651-8558)