

## Product Datasheet

### TERT rabbit pAb Antibody (orb767119)

|                             |   |
|-----------------------------|---|
| <b>Catalog Number</b>       | orb767119   |
| <b>Category</b>             | Antibodies  |
| <b>Description</b>          | Rabbit polyclonal antibody to TERT  |
| <b>Clonality</b>            | Polyclonal  |
| <b>Isotype</b>              | IgG   |
| <b>Conjugation</b>          | Unconjugated  |
| <b>Reactivity</b>           | Human, Mouse, Rat   |
| <b>Concentration</b>        | 1 mg/ml   |
| <b>Buffer/Preservatives</b> | PBS with 0.02% sodium azide and 50% glycerol pH 7.4.  |
| <b>Purification</b>         | The antibody was affinity-purified from rabbit antiserum by affinity-chromatography using epitope-specific immunogen.                   |
| <b>Immunogen</b>            | The antiserum was produced against synthesized peptide derived from the C-terminal region of human TERT. AA range:931-980               |
| <b>MW</b>                   | 130   |
| <b>Tested applications</b>  | ELISA, IF, IHC, WB  |
| <b>Dilution range</b>       | Western Blot: 1/500 - 1/2000. IHC-p: 1/100-1/300. ELISA: 1/20000. Not yet tested in other applications.                                 |
| <b>Source</b>               | Rabbit  |
| <b>Storage</b>              | Maintain refrigerated at 2-8°C for up to 2 weeks. For long term storage store at -20°C in small aliquots to prevent freeze-thaw cycles. |

**Biorbyt Ltd.**

7 Signet Court, Swann Road  
Cambridge  
CB5 8LA  
United Kingdom

Email: [info@biorbyt.com](mailto:info@biorbyt.com), [support@biorbyt.com](mailto:support@biorbyt.com)  
Phone: [+44 \(0\)1223 859353](tel:+44(0)1223859353) | Fax: [+1 \(415\) 651-8558](tel:+1(415)651-8558)

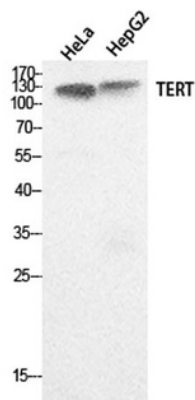
**Biorbyt LLC**

68 TW Alexander Drive  
Research Triangle Park  
Durham  
NC 27713  
United States

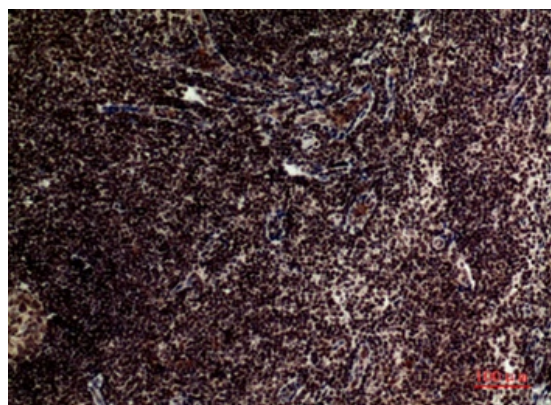
Email: [info@biorbyt.com](mailto:info@biorbyt.com), [support@biorbyt.com](mailto:support@biorbyt.com)  
Phone: [+1 \(415\) 906-5211](tel:+1(415)906-5211) | Fax: [+1 \(415\) 651-8558](tel:+1(415)651-8558)

**Note** For research use only

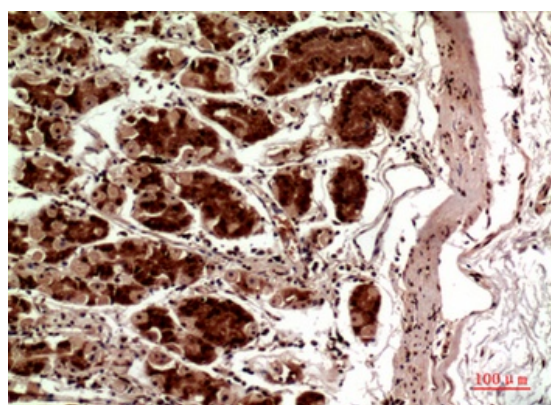
**Expiration Date** 12 months from date of receipt.



Western Blot analysis of HeLa, HepG2 cells using TERT Polyclonal Antibody. Secondary antibody was diluted at 1:20000.



Immunohistochemical analysis of paraffin-embedded human tonsilla, antibody was diluted at 1:100.



Immunohistochemical analysis of paraffin-embedded human stomach, antibody was diluted at 1:100.

#### **Biorbyt Ltd.**

7 Signet Court, Swann Road  
Cambridge  
CB5 8LA  
United Kingdom

Email: [info@biorbyt.com](mailto:info@biorbyt.com), [support@biorbyt.com](mailto:support@biorbyt.com)

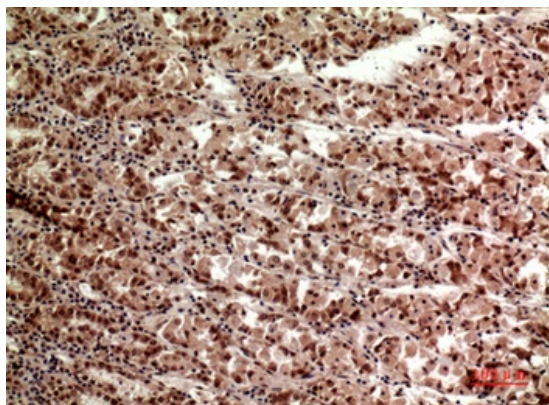
Phone: +44 (0)1223 859353 | Fax: +1 (415) 651-8558

#### **Biorbyt LLC**

68 TW Alexander Drive  
Research Triangle Park  
Durham  
NC 27713  
United States

Email: [info@biorbyt.com](mailto:info@biorbyt.com), [support@biorbyt.com](mailto:support@biorbyt.com)

Phone: +1 (415) 906-5211 | Fax: +1 (415) 651-8558



Immunohistochemical analysis of paraffin-embedded human-stomach, antibody was diluted at 1:100.

---

**Biorbyt Ltd.**

7 Signet Court, Swann Road  
Cambridge  
CB5 8LA  
United Kingdom

Email: [info@biorbyt.com](mailto:info@biorbyt.com), [support@biorbyt.com](mailto:support@biorbyt.com)

Phone: [+44 \(0\)1223 859353](tel:+44(0)1223859353) | Fax: [+1 \(415\) 651-8558](tel:+1(415)651-8558)

**Biorbyt LLC**

68 TW Alexander Drive  
Research Triangle Park  
Durham  
NC 27713  
United States

Email: [info@biorbyt.com](mailto:info@biorbyt.com), [support@biorbyt.com](mailto:support@biorbyt.com)

Phone: [+1 \(415\) 906-5211](tel:+1(415)906-5211) | Fax: [+1 \(415\) 651-8558](tel:+1(415)651-8558)