

## Product Datasheet

### ELOVL4 rabbit pAb Antibody (orb765130)

|                             |   |
|-----------------------------|---|
| <b>Catalog Number</b>       | orb765130   |
| <b>Category</b>             | Antibodies  |
| <b>Description</b>          | Rabbit polyclonal antibody to ELOVL4  |
| <b>Clonality</b>            | Polyclonal  |
| <b>Isotype</b>              | IgG   |
| <b>Conjugation</b>          | Unconjugated  |
| <b>Reactivity</b>           | Human, Mouse  |
| <b>Concentration</b>        | 1 mg/ml   |
| <b>Buffer/Preservatives</b> | PBS with 0.02% sodium azide and 50% glycerol pH 7.4.  |
| <b>Purification</b>         | The antibody was affinity-purified from rabbit antiserum by affinity-chromatography using epitope-specific immunogen.                   |
| <b>Immunogen</b>            | The antiserum was produced against synthesized peptide derived from human ELOVL4. AA range:41-90  |
| <b>MW</b>                   | 37  |
| <b>Tested applications</b>  | ELISA, WB   |
| <b>Dilution range</b>       | Western Blot: 1/500 - 1/2000. ELISA: 1/40000. Not yet tested in other applications.   |
| <b>Source</b>               | Rabbit  |
| <b>Storage</b>              | Maintain refrigerated at 2-8°C for up to 2 weeks. For long term storage store at -20°C in small aliquots to prevent freeze-thaw cycles. |

**Biorbyt Ltd.**

7 Signet Court, Swann Road  
Cambridge  
CB5 8LA  
United Kingdom

Email: [info@biorbyt.com](mailto:info@biorbyt.com), [support@biorbyt.com](mailto:support@biorbyt.com)

Phone: [+44 \(0\)1223 859353](tel:+44(0)1223859353) | Fax: [+1 \(415\) 651-8558](tel:+1(415)6518558)

**Biorbyt LLC**

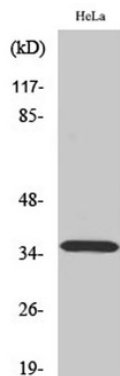
68 TW Alexander Drive  
Research Triangle Park  
Durham  
NC 27713  
United States

Email: [info@biorbyt.com](mailto:info@biorbyt.com), [support@biorbyt.com](mailto:support@biorbyt.com)

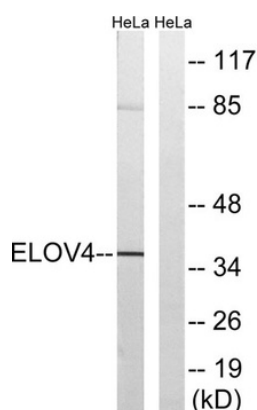
Phone: [+1 \(415\) 906-5211](tel:+1(415)9065211) | Fax: [+1 \(415\) 651-8558](tel:+1(415)6518558)

**Note** For research use only

**Expiration Date** 12 months from date of receipt.



Western Blot analysis of various cells using ELOVL4 Polyclonal Antibody diluted at 1:1000.



Western blot analysis of lysates from HeLa cells, using ELOVL4 Antibody. The lane on the right is blocked with the synthesized peptide.

**Biorbyt Ltd.**

7 Signet Court, Swann Road  
Cambridge  
CB5 8LA  
United Kingdom

Email: [info@biorbyt.com](mailto:info@biorbyt.com), [support@biorbyt.com](mailto:support@biorbyt.com)

Phone: [+44 \(0\)1223 859353](tel:+44(0)1223859353) | Fax: [+1 \(415\) 651-8558](tel:+1(415)651-8558)

**Biorbyt LLC**

68 TW Alexander Drive  
Research Triangle Park  
Durham  
NC 27713  
United States

Email: [info@biorbyt.com](mailto:info@biorbyt.com), [support@biorbyt.com](mailto:support@biorbyt.com)

Phone: [+1 \(415\) 906-5211](tel:+1(415)906-5211) | Fax: [+1 \(415\) 651-8558](tel:+1(415)651-8558)