

## Product Datasheet

### ALDH1B1 rabbit pAb Antibody (orb764512)

|                             |   |
|-----------------------------|---|
| <b>Catalog Number</b>       | orb764512   |
| <b>Category</b>             | Antibodies  |
| <b>Description</b>          | Rabbit polyclonal antibody to ALDH1B1   |
| <b>Clonality</b>            | Polyclonal  |
| <b>Isotype</b>              | IgG   |
| <b>Conjugation</b>          | Unconjugated  |
| <b>Reactivity</b>           | Human, Monkey   |
| <b>Concentration</b>        | 1 mg/ml   |
| <b>Buffer/Preservatives</b> | PBS with 0.02% sodium azide and 50% glycerol pH 7.4.  |
| <b>Purification</b>         | The antibody was affinity-purified from rabbit antiserum by affinity-chromatography using epitope-specific immunogen. |
| <b>Immunogen</b>            | The antiserum was produced against synthesized peptide derived from human ALDH1B1. AA range:311-360                   |
| <b>UniProt ID</b>           | <b>P30837</b>   |
| <b>MW</b>                   | 57  |
| <b>Tested applications</b>  | ELISA, WB   |
| <b>Dilution range</b>       | Western Blot: 1/500 - 1/2000. ELISA: 1/20000. Not yet tested in other applications.                                   |
| <b>Source</b>               | Rabbit  |

**Biorbyt Ltd.**

7 Signet Court, Swann Road  
Cambridge  
CB5 8LA  
United Kingdom

Email: [info@biorbyt.com](mailto:info@biorbyt.com), [support@biorbyt.com](mailto:support@biorbyt.com)  
Phone: [+44 \(0\)1223 859353](tel:+44(0)1223859353) | Fax: [+1 \(415\) 651-8558](tel:+1(415)651-8558)

**Biorbyt LLC**

68 TW Alexander Drive  
Research Triangle Park  
Durham  
NC 27713-2847  
United States

Email: [info@biorbyt.com](mailto:info@biorbyt.com), [support@biorbyt.com](mailto:support@biorbyt.com)  
Phone: [+1 \(415\) 906-5211](tel:+1(415)906-5211) | Fax: [+1 \(415\) 651-8558](tel:+1(415)651-8558)

**Storage**

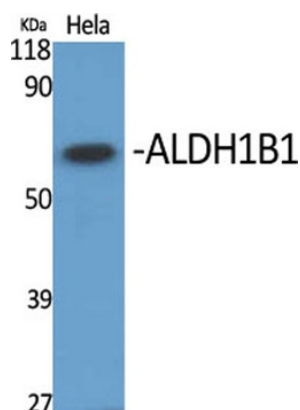
Maintain refrigerated at 2-8°C for up to 2 weeks. For long term storage store at -20°C in small aliquots to prevent freeze-thaw cycles.

**Note**

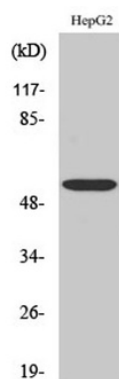
For research use only

**Expiration Date**

12 months from date of receipt.



Western Blot analysis of various cells using ALDH1B1 Polyclonal Antibody diluted at 1:1000.



Western Blot analysis of COS7 cells using ALDH1B1 Polyclonal Antibody diluted at 1:1000.

**Biorbyt Ltd.**

7 Signet Court, Swann Road  
Cambridge  
CB5 8LA  
United Kingdom

Email: [info@biorbyt.com](mailto:info@biorbyt.com), [support@biorbyt.com](mailto:support@biorbyt.com)

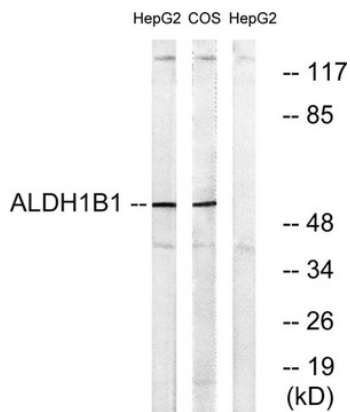
Phone: +44 (0)1223 859353 | Fax: +1 (415) 651-8558

**Biorbyt LLC**

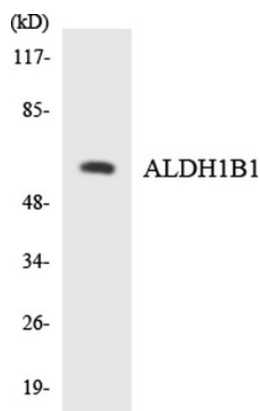
68 TW Alexander Drive  
Research Triangle Park  
Durham  
NC 27713-2847  
United States

Email: [info@biorbyt.com](mailto:info@biorbyt.com), [support@biorbyt.com](mailto:support@biorbyt.com)

Phone: +1 (415) 906-5211 | Fax: +1 (415) 651-8558



Western blot analysis of lysates from HepG2 and COS cells, using ALDH1B1 Antibody. The lane on the right is blocked with the synthesized peptide.



Western blot analysis of the lysates from HepG2 cells using ALDH1B1 antibody.

**Biorbyt Ltd.**

7 Signet Court, Swann Road  
Cambridge  
CB5 8LA  
United Kingdom

Email: [info@biorbyt.com](mailto:info@biorbyt.com), [support@biorbyt.com](mailto:support@biorbyt.com)

Phone: [+44 \(0\)1223 859353](tel:+44(0)1223859353) | Fax: [+1 \(415\) 651-8558](tel:+1(415)651-8558)

**Biorbyt LLC**

68 TW Alexander Drive  
Research Triangle Park  
Durham  
NC 27713-2847  
United States

Email: [info@biorbyt.com](mailto:info@biorbyt.com), [support@biorbyt.com](mailto:support@biorbyt.com)

Phone: [+1 \(415\) 906-5211](tel:+1(415)906-5211) | Fax: [+1 \(415\) 651-8558](tel:+1(415)651-8558)